



MarLIN

Marine Information Network

Information on the species and habitats around the coasts and sea of the British Isles

Saccharina latissima, *Chorda filum* and dense red seaweeds on shallow unstable infralittoral boulders or cobbles

MarLIN – Marine Life Information Network
Marine Evidence-based Sensitivity Assessment (MarESA) Review

Dr Keith Hiscock

2001-11-28

A report from:

The Marine Life Information Network, Marine Biological Association of the United Kingdom.

Please note. This MarESA report is a dated version of the online review. Please refer to the website for the most up-to-date version [<https://www.marlin.ac.uk/habitats/detail/363>]. All terms and the MarESA methodology are outlined on the website (<https://www.marlin.ac.uk>)

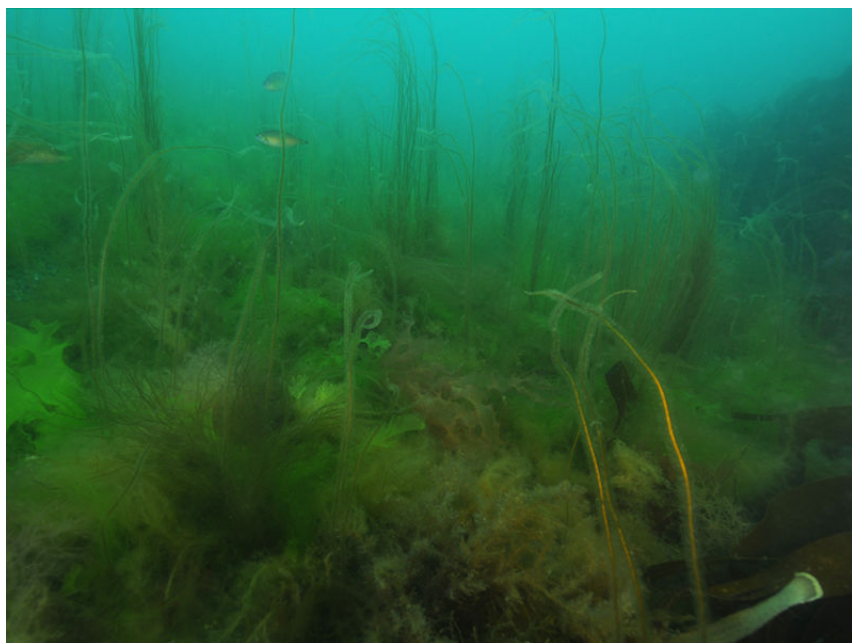
This review can be cited as:

Hiscock, K. 2001. [*Saccharina latissima*], [*Chorda filum*] and dense red seaweeds on shallow unstable infralittoral boulders or cobbles. In Tyler-Walters H. and Hiscock K. (eds) *Marine Life Information Network: Biology and Sensitivity Key Information Reviews*, [on-line]. Plymouth: Marine Biological Association of the United Kingdom. DOI <https://dx.doi.org/10.17031/marlinhab.363.1>



The information (TEXT ONLY) provided by the Marine Life Information Network (MarLIN) is licensed under a Creative Commons Attribution-Non-Commercial-Share Alike 2.0 UK: England & Wales License. Note that images and other media featured on this page are each governed by their own terms and conditions and they may or may not be available for reuse. Permissions beyond the scope of this license are available [here](#). Based on a work at www.marlin.ac.uk

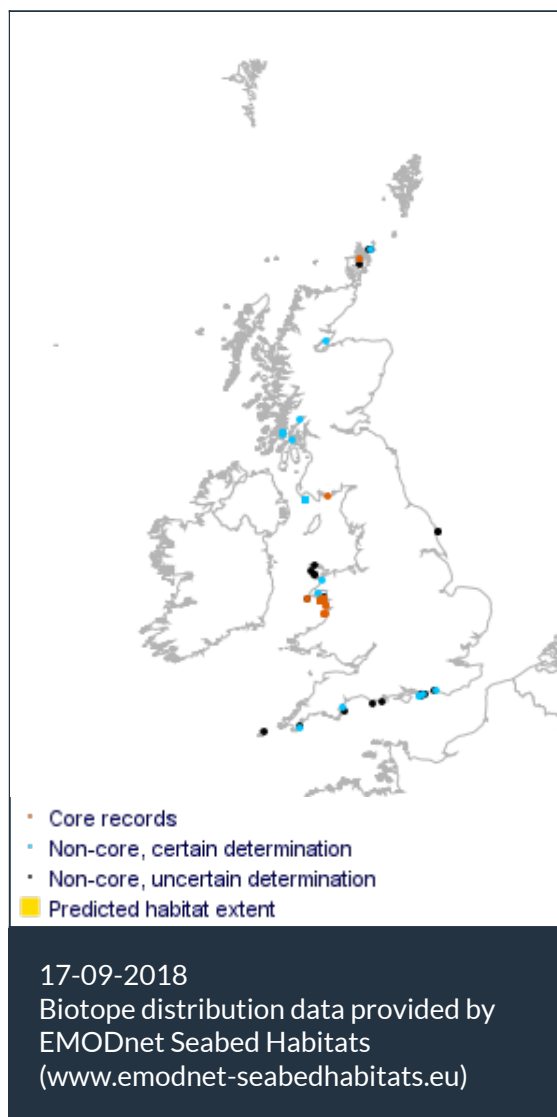
(page left blank)



Saccharina latissima, *Chorda filum* and dense red seaweeds on shallow unstable infralittoral boulders or cobbles

Photographer: Keith Hiscock

Copyright: Dr Keith Hiscock



Researched by Dr Keith Hiscock

Refereed by This information is not refereed.

Summary

☰ UK and Ireland classification

EUNIS 2008 A3.123

Laminaria saccharina, *Chorda filum* and dense red seaweeds on shallow unstable infralittoral boulders and cobbles

JNCC 2015 IR.HIR.KSed.SlatChoR

Saccharina latissima, *Chorda filum* and dense red seaweeds on shallow unstable infralittoral boulders or cobbles

JNCC 2004 IR.HIR.KSed.LsacChoR

Laminaria saccharina, *Chorda filum* and dense red seaweeds on shallow unstable infralittoral boulders or cobbles

1997 Biotope IR.MIR.SedK.LsacChoR

Laminaria saccharina, *Chorda filum* and dense red seaweeds on shallow unstable infralittoral boulders and cobbles

🔍 Description

Unstable boulders and cobbles in very shallow water may be seasonally disturbed which prevents a stable *Laminaria hyperborea* forest from developing. Seasonal movement of the substratum results in a community of the opportunistic kelp *Saccharina latissima*, *Chorda filum* and *Desmarestia*

spp. with encrusting algae and sediment-tolerant seaweeds. The shallowest areas of the Sarns in Cardigan Bay are typical examples of this biotope. (Information taken from the Marine Biotope Classification for Britain and Ireland, Version 97.06: Connor *et al.*, 1997a, b).

↓ Depth range

0-5 m

🏛️ Additional information

-

✓ Listed By

- none -

🔗 Further information sources

Search on:



Habitat review

Ecology

Ecological and functional relationships

The species present in this biotope thrive particularly in conditions of disturbance. They are mainly annual species with rapid growth or are perennial species that may die back in winter and persist as crusts or basal portions that survive abrasion during winter storms. Grazing species such as sea urchins do not survive well in conditions of abrasion and so seaweeds can thrive.

Seasonal and longer term change

It is expected that there will be considerable reduction in the abundance of foliose seaweeds especially following the summer. The reduction is partly because of grazing, partly seasonal disintegration of fronds and partly abrasion. Annual seaweeds start to colonize and perennial seaweeds to regrow in about April and can be expected to be fully grown by May.

Habitat structure and complexity

This is a complex habitat with semi-stable hard substratum supporting epibiota through to sediments supporting infauna. The fronds of seaweeds also provide significant surfaces especially for epibiota and for gastropods. The holdfasts of *Saccharina latissima* and, where present, of *Saccorhiza polyschides* provide a habitat for cryptic animal species.

Productivity

This biotope would appear to be productive of organic matter from seaweeds especially.

Recruitment processes

The dominant and characteristic species are recruited from planktonic larvae and spores. Other species such as fish and crustaceans are mainly transitory once settled.

Time for community to reach maturity

Providing that sources of larvae, spores and mobile animals are nearby, the biotope would develop rapidly on new substrata so that, in appearance based on visually dominant species, it would be likely to be established in a year. However, recruitment of a full range of species, especially molluscs and some algae would take longer so that a dynamic stability would probably be reached only after about three years.

Additional information

No information was available on the infauna associated with this biotope although it is expected that species will be tolerant of displacement.

Preferences & Distribution

Habitat preferences

Depth Range	0-5 m
Water clarity preferences	
Limiting Nutrients	No information found
Salinity preferences	Full (30-40 psu)
Physiographic preferences	Open coast
Biological zone preferences	Upper infralittoral
Substratum/habitat preferences	Large to very large boulders, Small boulders, Cobbles, Pebbles, Gravel / shingle
Tidal strength preferences	Moderately Strong 1 to 3 knots (0.5-1.5 m/sec.)
Wave exposure preferences	Moderately exposed
Other preferences	

Additional Information

See Sanderson *et al.* (2001) for detailed descriptions of the biotope

Species composition

Species found especially in this biotope

Rare or scarce species associated with this biotope

-

Additional information

The biotope may be conspicuously characterized by dense red algae (often bleached by sunlight) in spring and summer. These algae are ephemeral and especially include *Cystoclonium purpureum* and *Brongniartella byssoides* as well as the brown alga *Desmarestia aculeata*.

Sensitivity review

Sensitivity characteristics of the habitat and relevant characteristic species

IR.HIR.KSed.SlatChoR is within the sediment affected or disturbed kelp and seaweed communities (IR.HIR.KSed) habitat complex. Shallow boulders and cobbles are seasonally mobilised and the opportunistic brown seaweeds; *Saccharina latissima* (formerly *Laminaria saccharina*) and *Chorda filum* proliferate. The seasonal mobility of the substrata dislodges the resident community and inhibits the establishment of *Laminaria hyperborea* biotopes. As stability increases *Laminaria hyperborea* can become more abundant (Connor *et al.*, 2004).

Due to the disturbed nature of IR.HIR.KSed biotopes the understory community can be locally variable and defined by scour tolerant or ephemeral seaweeds, such as; Brown filamentous seaweeds (Ectocarpales), *Chondrus crispus*, *Corallina officinalis*, *Dilsea carnosa*, encrusting coralline algae and *Phyllophoras pseudoceranoides*. Faunal diversity and abundance are also generally low and typically limited to; encrusting bryozoans, *Spirobranchus triqueter* and other scour tolerant fauna (Connor *et al.*, 2004).

In undertaking this assessment of sensitivity, an account is taken of knowledge of the biology of all characterizing species/taxa in the biotope. However, 'indicative species' are particularly important in undertaking the assessment because they have been subject to detailed research. For this sensitivity assessment the opportunistic brown seaweeds; *Saccharina latissima* & *Chorda filum* are the primary foci of research. Examples of other important species groups are mentioned where appropriate.

Resilience and recovery rates of habitat

Saccharina latissima (formerly *Laminaria saccharina*) and *Chorda filum* are opportunistic seaweeds which have relatively fast growth rates when compared to other perennial species, and can dominate in areas subject to recurrent disturbance. *Saccharina latissima* is a perennial kelp which can reach maturity in 15-20 months ((Sjøtun, 1993) and has a life expectancy of 2-4 years (Parke, 1948). *Saccharina latissima* is widely distributed in the north Atlantic from Svalbard to Portugal (Birket *et al.*, 1998; Connor *et al.*, 2004; Bekby & Moy 2011; Moy & Christie 2012). *Chorda filum* has a widely distributed across the northern hemisphere (Algae Base, 2015). In the North Atlantic specifically, *Chorda filum* is recorded from Svalbard (Fredriksen *et al.*, 2014) to Northern Portugal (Araújo *et al.*, 2009). *Chorda filum* is an annual seaweed, completing its life cycle in a single season (Novaczek *et al.*, 1986).

Saccharina latissima and *Chorda filum* have heteromorphic life strategies (Bikett *et al.*, 1988). Mature sporophytes broadcast spawn zoospores from reproductive structures known as sori (South & Burrows, 1967; Birket *et al.*, 1998). Zoospores settle onto rock and develop into gametophytes, which following fertilization germinate into juvenile sporophytes. *Laminariales* zoospores are expected to have a large dispersal range, however, zoospore density and the rate of successful fertilization decreases exponentially with distance from the parental source (Fredriksen *et al.*, 1995). Hence, recruitment can be influenced by the proximity of mature kelp beds producing viable zoospores (Kain, 1979; Fredriksen *et al.*, 1995). *Saccharina latissima* recruits appear in late winter early spring beyond which is a period of rapid growth, during which sporophytes can reach a total length of 3m (Werner & Kraan, 2004), in late summer and autumn growth rates slow and spores are released from autumn to winter (Parke, 1948; Lüning, 1979; Birket *et al.*, 1998). The overall length of the sporophyte may not change during the growing season due to marginal

erosion but the growth of the blade has been measured at 1.1 cm/day, with a total length addition of ≥ 2.25 m per year (Birket *et al.*, 1998). *Chorda filum* recruits appear from February (South & Burrows, 1967), beyond which is a period of rapid growth during which sporophytes can reach a length of ≤ 6 m (South & Burrows, 1967). In culture *Chorda filum* can reach reproductive maturity and produce zoospores within 186 days (ca 6 months) of settlement, however, the time taken to reach maturity may be locally variable (South & Burrows, 1967). In nature sporophytes growth slows/stops from October and sporophytes may begin to die off (South & Burrows, 1967; Novaczek *et al.*, 1986).

Saccharina latissima can be quite ephemeral in nature and appear early in algal succession. For example, Leinaas & Christie (1996) removed *Strongylocentrotus droebachiensis* from "Urchin Barrens" and observed a succession effect. Initially, the substratum was colonized by filamentous algae, after a couple of weeks these were out-competed and the habitat dominated by *Saccharina latissima*, however, this was subsequently out-competed by *Laminaria hyperborea*. In the Isle of Man, Kain (1975) cleared sublittoral blocks of *Laminaria hyperborea* at different times of the year for several years. The first colonizers and succession community differed between blocks and at what time of year the blocks were cleared. *Saccharina latissima* was an early colonizer, however within 2 years of clearance the blocks were dominated by *Laminaria hyperborea*.

In 2002, a 50.7-83% decline of *Saccharina latissima* was discovered in the Skaggerak region, South Norway (Moy *et al.*, 2006; Moy & Christie, 2012). Survey results indicated a sustained shift from *Saccharina latissima* communities to those of ephemeral filamentous algal communities. The reason for the community shift was unknown, low water movement in wave and tidally sheltered areas combined with the impacts of dense human populations, e.g. increased land run-off, was suggested to be responsible for the dominance of ephemeral turf macro-algae. Multiple stressors such as eutrophication, increasing regional temperature, increased siltation and overfishing may also be acting synergistically to cause the observed habitat shift.

Resilience assessment. *Saccharina latissima* and *Chorda filum* are opportunistic species with rapid colonization and growth rates (South & Burrows, 1967; Birket *et al.*, 1998). *Chorda filum* is an annual seaweed, completing its life cycle within a single season. *Saccharina latissima* has been shown to be an early colonizer within algal succession, appearing within 2 weeks of clearance. Resilience has therefore been assessed as 'High' for all levels of resistance.

Hydrological Pressures

	Resistance	Resilience	Sensitivity
Temperature increase (local)	None Q: High A: High C: High	High Q: High A: High C: High	Medium Q: High A: High C: High

The temperature isotherm of 19-20 °C has been reported as limiting *Saccharina latissima* geographic distribution (Müller *et al.*, 2009). Gametophytes can develop in ≤ 23 °C (Lüning, 1990) however the optimal temperature range for sporophyte growth is 10-15 °C (Bolton & Lüning, 1982). Bolton & Lüning (1982) experimentally observed that sporophyte growth was inhibited by 50-70% at 20 °C and following 7 days at 23 °C all specimens completely disintegrated. In the field *Saccharina latissima* has shown significant regional variation in its acclimation to temperature changes, for example Gerard & Dubois (1988) observed sporophytes of *Saccharina latissima* which were regularly exposed to ≥ 20 °C could tolerate these temperatures, whereas sporophytes from other populations which rarely experience ≥ 17 °C showed 100% mortality after 3 weeks of

exposure to 20 °C. Therefore the response of *Saccharina latissima* to a change in temperatures is likely to be locally variable.

In experiments, Lüning (1980) observed that *Chorda filum* could not reproduce at 15-20 °C but found that sporophytes could tolerate ≤ 26 °C.

IR.HIR.KSed.Slat.ChoR is distributed throughout the UK (Connor *et al.*, 2004). Northern to southern Sea Surface Temperature (SST) ranges from 8-16 °C in summer and 6-13 °C in winter in the UK (Beszczynska-Möller & Dye, 2013). The effect of this pressure is likely to be regionally variable.

Sensitivity assessment. Ecotypes of *Saccharina lattissima* have been shown to have different temperature optimums (Dubois, 1988). Both a 2 & 5 °C increase in temperature when combined with high UK summer temperatures in the south of the UK could cause large scale mortality of *Saccharina lattissima* and inhibit *Chorda filum* reproduction. Resistance has been assessed as '**None**', Resilience as '**High**'. Sensitivity has been assessed as '**Medium**'.

Temperature decrease (local)

High

Q: High A: High C: High

High

Q: High A: High C: High

Not sensitive

Q: High A: High C: High

Saccharina lattissima and *Chorda filum* are widespread throughout the arctic. *Saccharina lattissima* has a lower temperature threshold for sporophyte growth at 0 °C (Lüning, 1990). *Chorda filum* sporophytes can also tolerate 0 °C, Novaczek *et al.*, (1986) observed that 99% of newly settled zoospores died at 0 °C but sporophytes transferred from 5 °C to 0 °C remained healthy and continued to grow for a period of 2 months. Novaczek *et al.*, (1986) therefore demonstrated that sporophytes could tolerate exposure to low (≥ 0 °C) temperatures, but that exposure could have negative effects on larval survival and recruitment processes. Subtidal red algae can survive at -2°C (Lüning, 1990; Kain & Norton, 1990). The distribution and temperature tolerances of these species suggests they likely be unaffected by temperature decreases assessed within this pressure.

Sensitivity assessment. Resistance has been assessed as '**High**', resilience as '**High**'. Sensitivity has been assessed as '**Not Sensitive**'.

Salinity increase (local)

Medium

Q: Low A: NR C: NR

High

Q: High A: High C: High

Low

Q: Low A: Low C: Low

Karsten (2007) tested the photosynthetic ability of *Saccharina latissima* under acute 2 and 5 day exposure to salinity treatments ranging from 5-60 psu. A control experiment was also carried at 34 psu. *Saccharina latissima* showed high photosynthetic ability at >80% of the control levels between 25-55 psu. However, Birkett *et al.* (1998) suggested that kelps are stenohaline and therefore long-term increases in salinity may be detrimental.

Chorda filum can be found in rock pools (South & Burrows, 1967). High air temperatures cause surface evaporation of water from rock pools, so that salinity steadily increases. The extent of temperature and salinity change is affected by the frequency and time of day at which tidal inundation occurs. If high tide occurs in early morning and evening the diurnal temperature follows that of the air, whilst high water at midday suddenly returns the temperature to that of the sea

(Pyefinch, 1943). It should be noted however that local populations may be acclimated to the prevailing salinity regime and may therefore exhibit different tolerances to other populations subject to different salinity conditions and therefore caution should be used when inferring tolerances. However, it is likely that *Chorda filum* is tolerant of short-term salinity increases.

Sensitivity assessment. The evidence suggests that *Saccharina latissima* and *Chorda filum* can tolerate short-term exposure to hypersaline conditions ($\geq 40\%$ -MNCR full salinity). An increase in salinity to $\geq 40\%$ long-term may however be above the optima for characterizing species and cause a decline in growth, and possibly loss of red algae and a reduction in species diversity. Resistance has been assessed as 'Medium', resilience as 'High'. The sensitivity of this biotope to an increase in salinity has been assessed as 'Low'.

Salinity decrease (local) **Medium** **High** **Low**
 Q: High A: High C: High Q: High A: High C: High Q: High A: High C: High

Karsten (2007) tested the photosynthetic ability of *Saccharina latissima* under acute 2 and 5 day exposure to salinity treatments ranging from 5-60 psu. A control experiment was also carried at 34 psu. *Saccharina latissima* showed high photosynthetic ability at $>80\%$ of the control levels between 25-55 psu. Hyposaline treatment of 10-20 psu led to a gradual decline of photosynthetic ability. After 2 days at 5 psu *Saccharina latissima* showed a significant decline in photosynthetic ability at approx. 30% of control. After 5 days at 5 psu *Saccharina latissima* specimens became bleached and showed signs of severe damage. The affect of long-term salinity changes (>5 days) or salinity >60 PSU on *Saccharina latissima*' photosynthetic ability was not tested. The experiment was conducted on *Saccharina latissima* from the Arctic, and the authors suggest that at extremely low water temperatures (1-5°C) macroalgae acclimation to rapid salinity changes could be slower than at temperate latitudes. It is therefore possible that resident *Saccharina latissima* of the UK maybe be able to acclimate to salinity changes more effectively and quicker.

Chorda filum is tolerant of low salinities (Hayren, 1940; Norton & South, 1969), and has been recorded at Björnholm, Finland where salinity has been recorded as low as 5.15‰ (Hayren, 1940). Norton & South (1969) observed (experimentally) that *Chorda filum* could develop sporophytes at $\geq 5\%$, however at low salinities the time taken to develop into sporophytes was slower than at full salinities (5‰=65 days, 35‰=16 days) and below 9‰ sporophytes did not grow above 2mm in length.

Sensitivity assessment. A decrease in one MNCR salinity scale from "Full Salinity" (30-40psu) to "Reduced Salinity" (18-30 psu) may inhibit *Saccharina lattissima* photosynthesis and hence growth. *Chorda filum* is highly tolerant of low salinity and is unlikely to be affected. Resistance has been assessed as 'Medium' resilience as 'High'. Sensitivity of this biotope to a decrease in salinity has been assessed as 'Low'.

Water flow (tidal current) changes (local) **High** **High** **Not sensitive**
 Q: High A: High C: High Q: High A: High C: High Q: High A: High C: High

Peteiro & Freire (2013) measured *Saccharina latissima* growth from 2 sites, the 1st had maximal water velocities of 0.3 m/sec and the 2nd 0.1 m/sec. At site 1 *Saccharina latissima* had significantly larger biomass than at site 2 (16 kg/m to 12 kg/m respectively). Peteiro & Freire (2013) suggested that faster water velocities were beneficial to *Saccharina latissima* growth. However, Gerard & Mann (1979) measured *Saccharina latissima* productivity at greater water velocities and found

Saccharina latissima productivity is reduced in moderately strong tidal streams (≤ 1 m/sec) when compared to weak tidal streams (<0.5 m/sec).

Chorda filum sporophytes often grow on unstable objects, such as pebbles and shell. Owing to the typically unstable substratum which *Chorda filum* grows on, whole populations can be moved during storms and deposited in more sheltered locations where development will continue (South & Burrows, 1967). The survival of *Chorda filum* sporophytes following transport of their attached substrata indicates the species is relatively tolerant to changes in water flow or wave action.

Sensitivity assessment. IR.HIR.KSed.SlatChoR is recorded from moderately strong (0.5-1.5m/sec)-weak tidal streams (<0.5 m/sec).A change of 0.1m/s to 0.2m/s is not likely to dramatically affect biotope structure. Resistance has been assessed as 'High', resilience as 'High'. Sensitivity has been assessed as 'Not Sensitive'.

Emergence regime changes

Medium

Q: Medium A: High C: High

High

Q: High A: Low C: High

Low

Q: Medium A: Low C: High

IR.HIR.KSed.SlatChoR is recorded from 0-10m Below Chart Datum (BCD) (Connor *et al.*, 2004). Both *Saccharina latissima* and *Chorda filum* can grow in the sub-littoral fringe (South & Burrows, 1967) and as such would likely be exposed during some low tides.

An increase in emergence will result in an increased risk of desiccation and mortality of *Saccharina latissima* and *Chorda filum*. Removal of canopy forming seaweeds has also been shown to increase desiccation and mortality of the understory macro-algae (Hawkins & Harkin, 1985). Providing that suitable substrata are present, the biotope is likely to re-establish further down the shore within a similar emergence regime to that which existed previously.

Sensitivity assessment. Resistance has been assessed as 'Medium'. Resilience as 'High'. The sensitivity of this biotope to a change in emergence is considered as 'Low'.

Wave exposure changes (local)

High

Q: Medium A: High C: High

High

Q: High A: High C: High

Not sensitive

Q: Medium A: High C: High

IR.HIR.KSed.SlatChoR is recorded from extreme wave exposed-sheltered sites (Connor *et al.*, 2004). Birket *et al.*, (1998) suggested that *Saccharina latissima* is rarely present in areas of wave exposure, where it is out-competed by *Laminaria hyperborea*. However, the seasonal unstable nature of the substrata within IR.HIR.KSed.SlatChoR is likely to inhibit growth of *Laminaria hyperborea* and allow *Saccharina latissima* to opportunistically colonize rock particles. *Chorda filum* sporophytes often grow on unstable objects, such as pebbles and shell. Owing to typically unstable substrate which *Chorda filum* grows on, whole populations can be moved during storms and deposited in more sheltered locations where development will continue (South & Burrows, 1967). The survival of *Chorda filum* sporophytes following transport of their attached substrata indicates the species is relatively tolerant to changes in water flow or wave action.

Sensitivity assessment. A large scale increase in local wave height may increase local sediment mobility, potentially increase dislodgment or relocation of sporophytes (South & Burrows, 1967; Birket *et al.*, 1998). However, an increase in nearshore significant wave height of 3-5% is not likely

to have a significant effect on biotope structure. Resistance has been assessed as 'High', Resilience as 'High'. Sensitivity has been assessed as 'Not Sensitive' at the benchmark level.

⚠ Chemical Pressures

	Resistance	Resilience	Sensitivity
Transition elements & organo-metal contamination	Not Assessed (NA) Q: NR A: NR C: NR	Not assessed (NA) Q: NR A: NR C: NR	Not assessed (NA) Q: NR A: NR C: NR

This pressure is **Not assessed** but evidence is presented where available

Bryan (1984) suggested that the general order for heavy metal toxicity in seaweeds is: Organic Hg > inorganic Hg > Cu > Ag > Zn > Cd > Pb. Cole *et al.*, (1999) reported that Hg was very toxic to macrophytes. Similarly, Hopkin & Kain (1978) demonstrated sub-lethal effects of heavy metals on kelp gametophytes and sporophytes, including reduced growth and respiration. Sheppard *et al.* (1980) noted that increasing levels of heavy metal contamination along the west coast of Britain reduced species number and richness in holdfast fauna, except for suspension feeders which became increasingly dominant. Gastropods may be relatively tolerant of heavy metal pollution (Bryan, 1984). Although macroalgae species may not be killed, except by high levels of contamination, reduced growth rates may impair the ability of the biotope to recover from other environmental disturbances. Thompson & Burrows (1984) observed the growth of *Saccharina latissima* sporophyte growth was significantly inhibited at 50 µg Cu /l, 1000 µg Zn/l and 50 µg Hg/l. Zoospores were found to be more intolerant and significant reductions in survival rates were observed at 25 µg Cu/l, 1000 µg Zn/l and 5 µg/l.

Hydrocarbon & PAH contamination	Not Assessed (NA) Q: NR A: NR C: NR	Not assessed (NA) Q: NR A: NR C: NR	Not assessed (NA) Q: NR A: NR C: NR
--	--	--	--

This pressure is **Not assessed** but evidence is presented where available.

The mucilaginous slime layer coating of laminariales may protect them from smothering by oil. Hydrocarbons in solution reduce photosynthesis and may be algicidal. However, Holt *et al.* (1995) reported that oil spills in the USA and from the *Torrey Canyon* had little effect on kelps. Similarly, surveys of subtidal communities at a number sites between 1-22.5m below chart datum showed no noticeable impacts of the *Sea Empress* oil spill and clean up (Rostron & Bunker, 1997) or during the experimental release of untreated oil in Baffin Island, Canada (Cross *et al.*, 1987). Laboratory studies of the effects of oil and dispersants on several red algae species (Grandy 1984) concluded that they were all sensitive to oil/ dispersant mixtures, with little differences between adults, sporelings, diploid or haploid life stages.

Synthetic compound contamination	Not Assessed (NA) Q: NR A: NR C: NR	Not assessed (NA) Q: NR A: NR C: NR	Not assessed (NA) Q: NR A: NR C: NR
---	--	--	--

This pressure is **Not assessed** but evidence is presented where available

O'Brian & Dixon (1976) suggested that red algae were the most sensitive group of macrophytes to oil and dispersant contamination (see Smith, 1968). *Saccharina latissima* has also been found to be

sensitive to antifouling compounds. Johansson (2009) exposed samples of *Saccharina latissima* to several antifouling compounds, observing chlorothalonil, DCOIT, dichlofluanid and tolylfluanid inhibited photosynthesis. Exposure to Chlorothalonil and tolylfluanid, was also found to continue inhibiting oxygen evolution after exposure had finished, and may cause irreversible damage.

Smith (1968) observed that epiphytic and benthic red algae were intolerant of dispersant or oil contamination during the *Torrey Canyon* oil spill; only the epiphytes *Cryptopleura ramosa* and *Spermothamnion repens* and some tufts of *Jania rubens* survived together with *Osmundea pinnatifida*, *Gigartina pistillata* and *Phyllophora crispa* from the sublittoral fringe.

Radionuclide contamination

No evidence (NEv)

Q: NR A: NR C: NR

Not relevant (NR)

Q: NR A: NR C: NR

No evidence (NEv)

Q: NR A: NR C: NR

No evidence

Introduction of other substances

Not Assessed (NA)

Q: NR A: NR C: NR

Not assessed (NA)

Q: NR A: NR C: NR

Not assessed (NA)

Q: NR A: NR C: NR

This pressure is **Not assessed**.

De-oxygenation

High

Q: Medium A: High C: High

High

Q: High A: High C: High

Not sensitive

Q: High A: High C: High

Reduced oxygen concentrations can inhibit both photosynthesis and respiration in macroalgae (Kinne, 1977). Despite this, macroalgae are thought to buffer the environmental conditions of low oxygen, thereby acting as a refuge for organisms in oxygen depleted regions especially if the oxygen depletion is short-term (Frieder *et al.*, 2012). A rapid recovery from a state of low oxygen is expected if the environmental conditions are transient. If levels do drop below 4 mg/l negative effects on these organisms can be expected with adverse effects occurring below 2mg/l (Cole *et al.*, 1999).

Sensitivity Assessment. Reduced oxygen levels are likely to inhibit photosynthesis and respiration but not cause a loss of the macroalgae population directly. Resistance has been assessed as 'High', Resilience as 'High'. Sensitivity has been assessed as 'Not sensitive' at the benchmark level.

Nutrient enrichment

Not relevant (NR)

Q: NR A: NR C: NR

Not relevant (NR)

Q: NR A: NR C: NR

Not sensitive

Q: NR A: NR C: NR

Conolly & Drew (1985) found *Saccharina latissima* sporophytes had relatively higher growth rates when in close proximity to a sewage outlet in St Andrews, UK when compared to other sites along the east coast of Scotland. At St Andrews, nitrate levels were 20.22µM, which represents an approx 25% increase when compared to other comparable sites (approx 15.87 µM). Handå *et al.* (2013) also reported *Saccharina latissima* sporophytes grew approx 1% faster per day when in close proximity to Salmon farms, where elevated ammonium can be readily absorbed. Read *et al.* (1983) reported after the installation of a new sewage treatment works which reduced the suspended solid content of liquid effluent by 60% in the Firth of Forth, *Saccharina latissima* became abundant where previously it had been absent. Bokn *et al.* (2003) conducted a nutrient loading experiment

on intertidal fucoids. Within 3 years of the experiment no significant effect was observed in the communities, however, 4-5 years into the experiment a shift occurred from perennials to ephemeral algae occurred. Although Bokn *et al.* (2003) focussed on fucoids the results could indicate that long-term (>4 years) nutrient loading can result in community shift to ephemeral algae species. Disparities between the findings of the aforementioned studies are likely to be related to the level of organic enrichment, however, could also be time dependant.

Johnston & Roberts (2009) conducted a meta-analysis, which reviewed 216 papers to assess how a variety of contaminants (including sewage and nutrient loading) affected 6 marine habitats (including subtidal reefs). A 30-50% reduction in species diversity and richness was identified from all habitats exposed to the contaminant types. Johnston & Roberts (2009) however also highlighted that macroalgal communities are relatively tolerant to contamination, but that contaminated communities can have low diversity assemblages which are dominated by opportunistic and fast growing species (Johnston & Roberts, 2009 and references therein).

At the time of writing little direct evidence for the effects of nutrient enrichment on *Chorda filum* could be found. Bonsdorff *et al.*, (2002) noted that chronic eutrophication in coastal areas can cause an increased abundance and dominance of filamentous algae, resulting in a decline of other resident algal communities. For example in Puck Bay, Poland *Chorda filum*, *Fucus vesiculosus* and *Furcellaria*

Lumbricalis have been absent sine the 1970's and the filamentous species *Ectocarpus spp.* and *Pilayella spp.* now dominates the area (Ciszewski *et al.*, 1992).

Sensitivity assessment. Although short-term exposure (<4 years) to nutrient enrichment may not affect seaweeds directly, indirect effects such as turbidity may significantly affect photosynthesis and result in reduced growth and reproduction and increased competition from fast growing but ephemeral species. However, this biotope is considered to be '**Not sensitive**' at the pressure benchmark, that assumes compliance with good status as defined by the WFD.

Organic enrichment

Medium

Q: Medium A: High C: High

High

Q: High A: Medium C: High

Low

Q: Medium A: Medium C: High

Read *et al.* (1983) reported after the installation of a new sewage treatment works which reduced the suspended solid content of liquid effluent by 60% in the Firth of Forth, *Saccharina latissima* became abundant where previously it had been absent. Bokn *et al.* (2003) conducted a nutrient loading experiment on intertidal fucoids. Within 3 years of the experiment no significant effect was observed in the communities, however, 4-5 years into the experiment a shift occurred from perennials to ephemeral algae occurred. Although Bokn *et al.* (2003) focussed on fucoids the results could indicate that long-term (>4 years) nutrient loading can result in community shift to ephemeral algae species. Disparities between the findings of the aforementioned studies are likely to be related to the level of organic enrichment, however, could also be time dependent.

Johnston & Roberts (2009) conducted a meta-analysis, which reviewed 216 papers to assess how a variety of contaminants (including sewage and nutrient loading) affected 6 marine habitats (including subtidal reefs). A 30-50% reduction in species diversity and richness was identified from all habitats exposed to the contaminant types. Johnston & Roberts (2009) however also highlighted that macroalgal communities are relatively tolerant to contamination, but that contaminated communities can have low diversity assemblages which are dominated by opportunistic and fast growing species (Johnston & Roberts, 2009). Organic enrichment may also

result in phytoplankton blooms that increase turbidity and, therefore, may negatively impact photosynthesis.

Sensitivity assessment. Although short-term exposure (<4 years) to organic enrichment may not affect seaweeds directly, indirect effects such as turbidity may significantly affect photosynthesis. Resistance has been assessed as '**Medium**', resilience as '**High**'. Sensitivity has been assessed as '**Low**'.

A Physical Pressures

	Resistance	Resilience	Sensitivity
Physical loss (to land or freshwater habitat)	None Q: High A: High C: High	Very Low Q: High A: High C: High	High Q: High A: High C: High

All marine habitats and benthic species are considered to have a resistance of '**None**' to this pressure and to be unable to recover from a permanent loss of habitat (resilience is '**Very Low**'). Sensitivity within the direct spatial footprint of this pressure is therefore '**High**'. Although no specific evidence is described confidence in this assessment is '**High**', due to the incontrovertible nature of this pressure.

Physical change (to another seabed type)	None Q: High A: High C: High	Very Low Q: High A: High C: High	High Q: High A: High C: High
---	--	--	--

If rock substrata were replaced with sedimentary substrata this would represent a fundamental change in habitat type, which *Saccharina latissima* and *Chorda filum* would not be able to tolerate. The biotope would be lost.

Sensitivity assessment. Resistance to the pressure is considered '**None**', and resilience '**Very Low**' or '**None**'. The sensitivity of this biotope to change from sedimentary or soft rock substrata to hard rock or artificial substrata or vice-versa is assessed as '**High**'.

Physical change (to another sediment type)	Not relevant (NR) Q: NR A: NR C: NR	Not relevant (NR) Q: NR A: NR C: NR	Not relevant (NR) Q: NR A: NR C: NR
---	---	---	---

Not relevant on hard rock substrata

Habitat structure changes - removal of substratum (extraction)	Not relevant (NR) Q: NR A: NR C: NR	Not relevant (NR) Q: NR A: NR C: NR	Not relevant (NR) Q: NR A: NR C: NR
---	---	---	---

Not relevant on hard rock substrata

Abrasion/disturbance of the surface of the substratum or seabed	None Q: Low A: NR C: NR	High Q: High A: High C: High	Medium Q: Low A: Low C: Low
--	-----------------------------------	--	---------------------------------------

Abrasion of the substratum e.g. from bottom or pot fishing gear, cable laying etc. may cause

localised mobility of the substrata and mortality of the resident community. The effect would be situation dependent, however, if bottom fishing gear were towed over a site it may mobilise a high proportion of the rock substrata and cause high mortality in the resident community.

Sensitivity assessment. Resistance has been assessed as '**None**', Resilience as '**High**'. Sensitivity has been assessed as '**Medium**'.

Penetration or disturbance of the substratum subsurface

Not relevant (NR)

Q: NR A: NR C: NR

Not relevant (NR)

Q: NR A: NR C: NR

Not relevant (NR)

Q: NR A: NR C: NR

Not relevant, please refer to pressure "Abrasion/disturbance of the substrata on the surface of the seabed".

Changes in suspended solids (water clarity)

None

Q: High A: High C: High

Medium

Q: High A: Medium C: High

Medium

Q: High A: High C: High

Suspended Particle Matter (SPM) concentration has a positive linear relationship with subsurface light attenuation (Kd) (Devlin *et al.*, 2008). Light availability and water turbidity are principal factors in determining depth range at which macro-algae can be found (Birkett *et al.*, 1998b). Light penetration influences the maximum depth at which *Laminarians* can grow and it has been reported that *Laminarians* grow at depths at which the light levels are reduced to 1 percent of incident light at the surface. Maximal depth distribution of laminarians, therefore, varies from 100 m in the Mediterranean to only 6-7 m in the silt-laden German Bight. In Atlantic European waters, the depth limit is typically 35 m. In very turbid waters the depth at which kelp is found may be reduced, or in some cases excluded completely (e.g. Severn Estuary), because of the alteration in light attenuation by suspended sediment (Lüning, 1990; Birkett *et al.* 1998b). *Laminarians* show a decrease of 50% photosynthetic activity when turbidity increases by 0.1/m (light attenuation coefficient = 0.1-0.2/m; Staehr & Wernberg, 2009).

Sensitivity Assessment. An increase in water clarity from clear to intermediate (10-100mg/l) represent a change in light attenuation of ca 0.67-6.7 Kd/m, and is likely to result in a greater than 50% reduction in photosynthesis of *Laminaria* spp. Therefore, the dominant kelp species will probably suffer a severe decline and resistance to this pressure is assessed as '**None**'. Resilience to this pressure is defined as '**Medium**' at the benchmark. Hence, this biotope is regarded as having a sensitivity of '**Medium**' to this pressure.

Smothering and siltation rate changes (light)

High

Q: Low A: NR C: NR

High

Q: Low A: NR C: NR

Not sensitive

Q: Low A: NR C: NR

Smothering by sediment e.g. 5 cm material during a discrete event, is unlikely to damage *Saccharina latissima* and *Chorda filum* sporophytes but may provide a physical barrier to zoospore settlement and, therefore, could negatively impact on recruitment processes (Moy & Christie, 2012). Laboratory studies showed that kelp and gametophytes can survive in darkness for between 6-16 months at 8°C and would probably survive smothering by a discrete event and once returned to normal conditions gametophytes resumed growth or maturation within 1 month (Dieck, 1993).

IR.HIR.KSed.SlatChoR is recorded from extreme wave exposed-sheltered sites (Connor *et al.*, 2004). In wave exposed biotopes deposited sediment is unlikely to remain for more than a few tidal cycles (due to water flow or wave action). In sheltered biotopes deposited sediment could remain however are unlikely to remain for longer than a year.

Sensitivity assessment. Resistance has been assessed as 'High', resilience as 'High'. Sensitivity has been assessed as 'Not Sensitive'.

Smothering and siltation rate changes (heavy)

Medium

Q: Low A: NR C: NR

High

Q: Low A: NR C: NR

Low

Q: Low A: Low C: Low

Smothering by sediment e.g. 30 cm material during a discrete event, is unlikely to damage mature *Saccharina latissima* and *Chorda filum* sporophytes but may provide a physical barrier to zoospore settlement and, therefore, could negatively impact on recruitment processes (Moy & Christie, 2012). The volume of sediment may also inundate juvenile sporophytes. Given the microscopic size of the gametophyte, 30cm of sediment could be expected to significantly inhibit growth. Laboratory studies showed that kelp and gametophytes can survive in darkness for between 6-16 months at 8°C and would probably survive smothering by a discrete event and once returned to normal conditions gametophytes resumed growth or maturation within 1 month (Dieck, 1993).

IR.HIR.KSed.SlatChoR is recorded from extreme wave exposed-sheltered sites (Connor *et al.*, 2004). In wave exposed biotopes deposited sediment is unlikely to remain for more than a few tidal cycles (due to water flow or wave action). In sheltered biotopes deposited sediment could remain, however, is unlikely to remain for longer than a year.

Sensitivity assessment. Resistance has been assessed as 'Medium', resilience as 'High'. Sensitivity has been assessed as 'Low'.

Litter

Not Assessed (NA)

Q: NR A: NR C: NR

Not assessed (NA)

Q: NR A: NR C: NR

Not assessed (NA)

Q: NR A: NR C: NR

Not assessed.

Electromagnetic changes

Not relevant (NR)

Q: NR A: NR C: NR

Not relevant (NR)

Q: NR A: NR C: NR

No evidence (NEv)

Q: NR A: NR C: NR

No evidence

Underwater noise changes

Not relevant (NR)

Q: NR A: NR C: NR

Not relevant (NR)

Q: NR A: NR C: NR

Not relevant (NR)

Q: NR A: NR C: NR

Not relevant

Introduction of light or shading**Low**

Q: Low A: NR C: NR

Medium

Q: Low A: NR C: NR

Medium

Q: Low A: Low C: Low

There is no evidence to suggest that anthropogenic light sources would affect *Saccharina latissima* or *Chorda filum*. Shading of the biotope (e.g. by the construction of a pontoon, pier etc) could adversely affect the biotope in areas where the water clarity is also low, and tip the balance to shade tolerant species, resulting in the loss of the biotope directly within the shaded area, or a reduction in seaweed abundance.

Sensitivity assessment. Resistance is probably 'Low', with a 'Medium' resilience and a sensitivity of 'Medium', albeit with 'low' confidence due to the lack of direct evidence.

Barrier to species movement

Not relevant (NR)

Q: NR A: NR C: NR

Not relevant (NR)

Q: NR A: NR C: NR

Not relevant (NR)

Q: NR A: NR C: NR

Not relevant. This pressure is considered applicable to mobile species, e.g. fish and marine mammals rather than seabed habitats. Physical and hydrographic barriers may limit the dispersal of spores, but spore dispersal is not considered under the pressure definition and benchmark.

Death or injury by collision

Not relevant (NR)

Q: NR A: NR C: NR

Not relevant (NR)

Q: NR A: NR C: NR

Not relevant (NR)

Q: NR A: NR C: NR

Not relevant.

Visual disturbance

Not relevant (NR)

Q: NR A: NR C: NR

Not relevant (NR)

Q: NR A: NR C: NR

Not relevant (NR)

Q: NR A: NR C: NR

Not relevant

 Biological Pressures**Resistance****Resilience****Sensitivity****Genetic modification & translocation of indigenous species**

Not relevant (NR)

Q: NR A: NR C: NR

Not relevant (NR)

Q: NR A: NR C: NR

No evidence (NEv)

Q: NR A: NR C: NR

There is little evidence for translocation of *Saccharina latissima* or *Chorda filum* over significant geographic distances. Nor is there any evidence regarding the genetic modification or effects of translocation of native kelp populations.

Introduction or spread of invasive non-indigenous species**Low**

Q: High A: High C: High

Very Low

Q: High A: High C: High

High

Q: High A: High C: High

Undaria pinnatifida has received a large amount of research attention as a major Invasive Non-Indigenous Species (INIS) which could out-compete native UK kelp habitats (see Farrell & Fletcher,

2006; Thompson & Schiel, 2012, Brodie *et al.*, 2014; Hieser *et al.*, 2014). *Undaria pinnatifida* was first recorded in the UK, Hamble Estuary, in June 1994 (Fletcher & Manfredi, 1995) and has since spread to a number of British ports. *Undaria pinnatifida* is an annual species, sporophytes appear in Autumn and grow rapidly throughout winter and spring during which they can reach a length of 1.65m (Birkett *et al.*, 1998b). Farrell & Fletcher (2006) suggested that native short lived species that occupy similar ecological niches to *Undaria pinnatifida*, such as *Saccharina latissima* or *Chorda filum*, are likely to be worst affected and out-competed by *Undaria pinnatifida*. Where present, an abundance of *Undaria pinnatifida* corresponded to a decline in *Saccharina latissima* (Farrell & Fletcher, 2006) and *Laminaria hyperborea* (Hieser *et al.*, 2014).

In New Zealand, Thompson & Schiel (2012) observed that native fucoids could out-compete *U.pinnatifida* and re-dominate the substratum. However, Thompson & Schiel (2012) suggested the fucoid recovery was partially due to an annual *Undaria pinnatifida* die back, which as noted by Heiser *et al.*, (2014) does not occur in Plymouth sound, UK. *Undaria pinnatifida* was successfully eradicated on a sunken ship in Clatham Islands, New Zealand, by applying a heat treatment of 70°C (Wotton *et al.*, 2004) however numerous other eradication attempts have failed, and as noted by Fletcher & Farrell, (1999) once established *Undaria pinnatifida* resists most attempts of long-term removal. The biotope is unlikely to fully recover until *Undaria pinnatifida* is fully removed from the habitat, which as stated above is unlikely to occur.

Sensitivity assessment. Resistance to the pressure is considered ‘**Low**’, and resilience ‘**Very Low**’. The sensitivity of this biotope to the introduction of microbial pathogens is assessed as ‘**High**’.

Introduction of microbial pathogens

Low

Q: **Low** A: **NR** C: **NR**

High

Q: **High** A: **High** C: **High**

Low

Q: **Low** A: **Low** C: **Low**

Laminariales may be infected by the microscopic brown alga *Streblonema aecidioides*. Infected algae show symptoms of Streblonema disease, i.e. alterations of the blade and stipe ranging from dark spots to heavy deformations and completely crippled thalli. Infection can reduce growth rates of host algae (Peters & Scaffelke, 1996). The marine fungi *Eurychasma spp* can also infect early life stages of Laminariales and *Desmarestia viridis*, however, the effects of infection are unknown (Müller *et al.*, 1999).

Sensitivity assessment. Resistance to the pressure is considered ‘**Low**’, and resilience ‘**High**’. The sensitivity of this biotope to the introduction of microbial pathogens is assessed as ‘**Low**’.

Removal of target species

Not relevant (NR)

Q: **NR** A: **NR** C: **NR**

Not relevant (NR)

Q: **NR** A: **NR** C: **NR**

Not relevant (NR)

Q: **NR** A: **NR** C: **NR**

There has been recent commercial interest in *Saccharina latissima* as a consumable called “sea vegetables” (Birkett *et al.*, 1998). However, *Saccharina latissima* sporophytes are typically matured on ropes (Handå *et al.* 2013) and not directly extracted from the seabed, as with *Laminaria hyperborea* (Christie *et al.*, 1998). No evidence has been found for commercial extraction of *Chorda filum*. This pressure has therefore been assessed as **not relevant**.

Removal of non-target species

None

Q: **Low** A: **NR** C: **NR**

High

Q: **High** A: **High** C: **High**

Medium

Q: **Low** A: **Low** C: **Low**

Low level disturbances (e.g. solitary anchors and scallop dredges) are unlikely to cause harm to the biotope as a whole, due to the impact's small footprint. Thus, evidence to assess the resistance of IR.HIR.KSed.SlatChoR to non-targeted removal is limited. It is assumed that incidental non-targeted catch will mobilise sediment and cause high mortality within the affected area.

Sensitivity assessment. Resistance has been assessed as '**None**', resilience as '**High**', and sensitivity assessed as '**Medium**'.

Bibliography

- Algae base, 2015. *Chorda filum* (Linnaeus) Stackhouse. (08 September 2009). http://www.algaebase.org/search/species/detail/?species_id=27255&sk=0&from=results
- Araújo, R., Vaselli, S., Almeida, M., Serrão, E. & Sousa-Pinto, I., 2009. Effects of disturbance on marginal populations: human trampling on *Ascophyllum nodosum* assemblages at its southern distribution limit. *Marine Ecology Progress Series*, **378**, 81-92.
- Bekkby, T. & Moy, F.E., 2011. Developing spatial models of sugar kelp (*Saccharina latissima*) potential distribution under natural conditions and areas of its disappearance in Skagerrak. *Estuarine Coastal and Shelf Science*, **95** (4), 477-483.
- Beszczynska-Möller, A., & Dye, S.R., 2013. ICES Report on Ocean Climate 2012. In *ICES Cooperative Research Report*, vol. 321 pp. 73.
- Birkett, D.A., Maggs, C.A., Dring, M.J. & Boaden, P.J.S., 1998b. Infralittoral reef biotopes with kelp species: an overview of dynamic and sensitivity characteristics for conservation management of marine SACs. *Natura 2000 report prepared by Scottish Association of Marine Science (SAMS) for the UK Marine SACs Project.*, Scottish Association for Marine Science. (UK Marine SACs Project, vol V.). Available from: <http://www.ukmarinesac.org.uk/publications.htm>
- Bokn, T.L., Duarte, C.M., Pedersen, M.F., Marba, N., Moy, F.E., Barrón, C., Bjerkeng, B., Borum, J., Christie, H. & Engelbert, S., 2003. The response of experimental rocky shore communities to nutrient additions. *Ecosystems*, **6** (6), 577-594.
- Bolton, J.J. & Lüning, K., 1982. Optimal growth and maximal survival temperatures of Atlantic *Laminaria* species (Phaeophyta) in culture. *Marine Biology*, **66**, 89-94.
- Bonsdorff, E., Rönnerberg, C. & Aarnio, K., 2002. Some ecological properties in relation to eutrophication in the Baltic Sea. *Nutrients and Eutrophication in Estuaries and Coastal Waters*: Springer, pp. 371-377.
- Bower, S.M., 1996. *Synopsis of Infectious Diseases and Parasites of Commercially Exploited Shellfish: Bald-sea-urchin Disease*. [On-line]. Fisheries and Oceans Canada. [cited 26/01/16]. Available from: <http://www.dfo-mpo.gc.ca/science/aah-saa/diseases-maladies/bsudsu-eng.html>
- Brodie J., Williamson, C.J., Smale, D.A., Kamenos, N.A., Mieszkowska, N., Santos, R., Cunliffe, M., Steinke, M., Yesson, C. & Anderson, K.M., 2014. The future of the northeast Atlantic benthic flora in a high CO₂ world. *Ecology and Evolution*, **4** (13), 2787-2798.
- Bruyns, W.F.J.M., 1971. *Field guide of whales and dolphins*. Amsterdam: Publishing Company Tors.
- Bryan, G.W., 1984. Pollution due to heavy metals and their compounds. In *Marine Ecology: A Comprehensive, Integrated Treatise on Life in the Oceans and Coastal Waters*, vol. 5. *Ocean Management*, part 3, (ed. O. Kinne), pp.1289-1431. New York: John Wiley & Sons.
- Burrows, M.T., Smale, D., O'Connor, N., Rein, H.V. & Moore, P., 2014. Marine Strategy Framework Directive Indicators for UK Kelp Habitats Part 1: Developing proposals for potential indicators. *Joint Nature Conservation Committee*, Peterborough. Report no. 525.
- Casas, G., Scrosati, R. & Piriz, M.L., 2004. The invasive kelp *Undaria pinnatifida* (Phaeophyceae, Laminariales) reduces native seaweed diversity in Nuevo Gulf (Patagonia, Argentina). *Biological Invasions*, **6** (4), 411-416.
- Christie, H., Fredriksen, S. & Rinde, E., 1998. Regrowth of kelp and colonization of epiphyte and fauna community after kelp trawling at the coast of Norway. *Hydrobiologia*, **375/376**, 49-58.
- Ciszewski, P., Kruk-Dowgiallo, L. & Zmudzinski, L., 1992. Deterioration of the Puck Bay and biotechnical approaches to its reclamation. *Proc. 12th Baltic Marine Biologists symp. Olsen & Olsen, Fredensborg*, pp. 43-46.
- Cole, S., Codling, I.D., Parr, W., Zabel, T., 1999. Guidelines for managing water quality impacts within UK European marine sites [On-line]. *UK Marine SACs Project*. [Cited 26/01/16]. Available from: http://www.ukmarinesac.org.uk/pdfs/water_quality.pdf
- Connor, D.W., Allen, J.H., Golding, N., Howell, K.L., Lieberknecht, L.M., Northen, K.O. & Reker, J.B., 2004. The Marine Habitat Classification for Britain and Ireland. Version 04.05. ISBN 1 861 07561 8. In JNCC (2015), *The Marine Habitat Classification for Britain and Ireland Version 15.03*. [2019-07-24]. Joint Nature Conservation Committee, Peterborough. Available from <https://mhc.jncc.gov.uk/>
- Connor, D.W., Dalkin, M.J., Hill, T.O., Holt, R.H.F. & Sanderson, W.G., 1997a. Marine biotope classification for Britain and Ireland. Vol. 2. Sublittoral biotopes. *Joint Nature Conservation Committee, Peterborough, JNCC Report no. 230*, Version 97.06., *Joint Nature Conservation Committee, Peterborough, JNCC Report no. 230*, Version 97.06.
- Conolly N.J. & Drew, E.A., 1985. Physiology of *Laminaria*. III. Effect of a coastal eutrophication on seasonal patterns of growth and tissue composition in *Laminaria digitata* and *L. saccharina*. *Marine Ecology, Pubblicazioni della Stazione Zoologica di Napoli I*, **6**, 181-195.
- Cross, W.E., Wilce, R.T. & Fabijan, M.F., 1987. Effects of experimental releases of oil and dispersed oil on Arctic nearshore macrobenthos. III. Macroalgae. *Arctic*, 211-219.
- Dauvin, J.C., Bellan, G., Bellan-Santini, D., Castric, A., Francour, P., Gentil, F., Girard, A., Gofas, S., Mahe, C., Noel, P., & Reviers, B. de., 1994. Typologie des ZNIEFF-Mer. Liste des parametres et des biocoenoses des cotes francaises metropolitaines. 2nd ed. *Secretariat Faune-Flore, Museum National d'Histoire Naturelle, Paris (Collection Patrimoines Naturels, Serie Patrimoine Ecologique, No. 12)*. Coll. Patrimoines Naturels, vol. 12, Secretariat Faune-Flore, Paris.
- Davies, C.E. & Moss, D., 1998. European Union Nature Information System (EUNIS) Habitat Classification. *Report to European*

- Topic Centre on Nature Conservation from the Institute of Terrestrial Ecology, Monks Wood, Cambridgeshire. [Final draft with further revisions to marine habitats.], Brussels: European Environment Agency.
- Dayton, P.K., Tegner, M.J., Parnell, P.E. & Edwards, P.B., 1992. Temporal and spatial patterns of disturbance and recovery in a kelp forest community. *Ecological Monographs*, **62**, 421-445.
- Devlin, M.J., Barry, J., Mills, D.K., Gowen, R.J., Foden, J., Sivyer, D. & Tett, P., 2008. Relationships between suspended particulate material, light attenuation and Secchi depth in UK marine waters. *Estuarine, Coastal and Shelf Science*, **79** (3), 429-439.
- Dieck, T.I., 1992. North Pacific and North Atlantic digitate *Laminaria* species (Phaeophyta): hybridization experiments and temperature responses. *Phycologia*, **31**, 147-163.
- Dieck, T.I., 1993. Temperature tolerance and survival in darkness of kelp gametophytes (Laminariales: Phaeophyta) - ecological and biogeographical implications. *Marine Ecology Progress Series*, **100**, 253-264.
- Edwards, A., 1980. Ecological studies of the kelp *Laminaria hyperborea* and its associated fauna in south-west Ireland. *Ophelia*, **9**, 47-60.
- Elnor, R.W. & Vadas, R.L., 1990. Inference in ecology: the sea urchin phenomenon in the northwest Atlantic. *American Naturalist*, **136**, 108-125.
- Erwin, D.G., Picton, B.E., Connor, D.W., Howson, C.M., Gilleece, P. & Bagues, M.J., 1990. Inshore Marine Life of Northern Ireland. Report of a survey carried out by the diving team of the Botany and Zoology Department of the Ulster Museum in fulfilment of a contract with Conservation Branch of the Department of the Environment (N.I.), Ulster Museum, Belfast: HMSO.
- Farrell, P. & Fletcher, R., 2006. An investigation of dispersal of the introduced brown alga *Undaria pinnatifida* (Harvey) Suringar and its competition with some species on the man-made structures of Torquay Marina (Devon, UK). *Journal of Experimental Marine Biology and Ecology*, **334** (2), 236-243.
- Fletcher, R.L. & Manfredi, C., 1995. The occurrence of *Undaria pinnatifida* (Phaeophyceae, Laminariales) on the South Coast of England. *Botanica Marina*, **38** (4), 355-358.
- Fletcher, R.L., 1996. The occurrence of 'green tides' - a review. In *Marine Benthic Vegetation. Recent changes and the Effects of Eutrophication* (ed. W. Schramm & P.H. Nienhuis). Berlin Heidelberg: Springer-Verlag. [Ecological Studies, vol. 123].
- Fredriksen, S., Bartsch, I. & Wiencke, C., 2014. New additions to the benthic marine flora of Kongsfjorden, western Svalbard, and comparison between 1996/1998 and 2012/2013. *Botanica Marina*, **57** (3), 203-216.
- Fredriksen, S., Sjøtun, K., Lein, T.E. & Rueness, J., 1995. Spore dispersal in *Laminaria hyperborea* (Laminariales, Phaeophyceae). *Sarsia*, **80** (1), 47-53.
- Frieder, C., Nam, S., Martz, T. & Levin, L., 2012. High temporal and spatial variability of dissolved oxygen and pH in a nearshore California kelp forest. *Biogeosciences*, **9** (10), 3917-3930.
- Gerard, V.A. & Du Bois, K.R., 1988. Temperature ecotypes near the southern boundary of the kelp *Laminaria saccharina*. *Marine Biology*, **97**, 575-580.
- Gerard, V.A. & Mann, K.H., 1979. Growth and production of *Laminaria longicuris* (Phaeophyta) populations exposed to different intensities of water movement 1. *Journal of Phycology*, **15** (1), 33-41.
- Gomez, J.L.C. & Miguez-Rodriguez, L.J., 1999. Effects of oil pollution on skeleton and tissues of *Echinus esculentus* L. 1758 (Echinodermata, Echinoidea) in a population of A Coruna Bay, Galicia, Spain. In *Echinoderm Research 1998. Proceedings of the Fifth European Conference on Echinoderms, Milan, 7-12 September 1998*, (ed. M.D.C. Carnevali & F. Bonasoro) pp. 439-447. Rotterdam: A.A. Balkema.
- Gorman, D., Bajjouk, T., Populus, J., Vasquez, M. & Ehrhold, A., 2013. Modeling kelp forest distribution and biomass along temperate rocky coastlines. *Marine Biology*, **160** (2), 309-325.
- Grandy, N., 1984. *The effects of oil and dispersants on subtidal red algae*. Ph.D. Thesis. University of Liverpool.
- Hammer, L., 1972. Anaerobiosis in marine algae and marine phanerogams. In *Proceedings of the Seventh International Seaweed Symposium, Sapporo, Japan, August 8-12, 1971* (ed. K. Nisizawa, S. Arasaki, Chihara, M., Hirose, H., Nakamura V., Tsuchiya, Y.), pp. 414-419. Tokyo: Tokyo University Press.
- Handå, A., Forbord, S., Wang, X., Broch, O.J., Dahle, S.W., Storseth, T.R., Reitan, K.I., Olsen, Y. & Skjermo, J., 2013. Seasonal and depth-dependent growth of cultivated kelp (*Saccharina latissima*) in close proximity to salmon (*Salmo salar*) aquaculture in Norway. *Aquaculture*, **414**, 191-201.
- Harkin, E., 1981. Fluctuations in epiphyte biomass following *Laminaria hyperborea* canopy removal. In *Proceedings of the Xth International Seaweed Symposium, Gøteborg, 11-15 August 1980* (ed. T. Levring), pp.303-308. Berlin: Walter de Gruyter.
- Hawkins, S.J. & Hartnoll, R.G., 1985. Factors determining the upper limits of intertidal canopy-forming algae. *Marine Ecology Progress Series*, **20**, 265-271.
- Hayward, P.J. 1988. *Animals on seaweed*. Richmond, Surrey: Richmond Publishing Co. Ltd. [Naturalists Handbooks 9].
- Heiser, S., Hall-Spencer, J.M. & Hiscock, K., 2014. Assessing the extent of establishment of *Undaria pinnatifida* in Plymouth Sound Special Area of Conservation, UK. *Marine Biodiversity Records*, **7**, e93.
- Hiscock, K. & Mitchell, R., 1980. *The Description and Classification of Sublittoral Epibenthic Ecosystems*. In *The Shore Environment, Vol. 2, Ecosystems*, (ed. J.H. Price, D.E.G. Irvine, & W.F. Farnham), 323-370. London and New York: Academic Press. [Systematics Association Special Volume no. 17(b)].
- Holt, T.J., Jones, D.R., Hawkins, S.J. & Hartnoll, R.G., 1995. The sensitivity of marine communities to man induced change - a

- scoping report. Countryside Council for Wales, Bangor, Contract Science Report, no. 65.
- Hopkin, R. & Kain, J.M., 1978. The effects of some pollutants on the survival, growth and respiration of *Laminaria hyperborea*. *Estuarine and Coastal Marine Science*, **7**, 531-553.
- JNCC, 2015. The Marine Habitat Classification for Britain and Ireland Version 15.03. (20/05/2015). Available from <https://mhc.jncc.gov.uk/>
- JNCC, 2015. The Marine Habitat Classification for Britain and Ireland Version 15.03. (20/05/2015). Available from <https://mhc.jncc.gov.uk/>
- JNCC (Joint Nature Conservation Committee), 1999. *Marine Environment Resource Mapping And Information Database (MERMAID): Marine Nature Conservation Review Survey Database*. [on-line] <http://www.jncc.gov.uk/mermaid>
- Johansson, P., 2009. Effects of intermittent exposure of marine pollutants on sugar kelp and periphyton. Department of Plant and Environmental Sciences, University of Gothenburg.
- Johnston, E.L. & Roberts, D.A., 2009. Contaminants reduce the richness and evenness of marine communities: a review and meta-analysis. *Environmental Pollution*, **157** (6), 1745-1752.
- Jones, C.G., Lawton, J.H. & Shackak, M., 1994. Organisms as ecosystem engineers. *Oikos*, **69**, 373-386.
- Jones, D.J., 1971. Ecological studies on macro-invertebrate communities associated with polluted kelp forest in the North Sea. *Helgolander Wissenschaftliche Meeresuntersuchungen*, **22**, 417-431.
- Jones, L.A., Hiscock, K. & Connor, D.W., 2000. Marine habitat reviews. A summary of ecological requirements and sensitivity characteristics for the conservation and management of marine SACs. *Joint Nature Conservation Committee, Peterborough. (UK Marine SACs Project report)*. Available from: <http://www.ukmarinesac.org.uk/pdfs/marine-habitats-review.pdf>
- Jones, N.S. & Kain, J.M., 1967. Subtidal algal recolonisation following removal of *Echinus*. *Helgolander Wissenschaftliche Meeresuntersuchungen*, **15**, 460-466.
- Kain, J.M., 1964. Aspects of the biology of *Laminaria hyperborea* III. Survival and growth of gametophytes. *Journal of the Marine Biological Association of the United Kingdom*, **44** (2), 415-433.
- Kain, J.M. & Svendsen, P., 1969. A note on the behaviour of *Patina pellucida* in Britain and Norway. *Sarsia*, **38**, 25-30.
- Kain, J.M., 1971a. Synopsis of biological data on *Laminaria hyperborea*. *FAO Fisheries Synopsis*, no. 87.
- Kain, J.M., 1975a. Algal recolonization of some cleared subtidal areas. *Journal of Ecology*, **63**, 739-765.
- Kain, J.M., 1979. A view of the genus *Laminaria*. *Oceanography and Marine Biology: an Annual Review*, **17**, 101-161.
- Kain, J.M., 1987. Photoperiod and temperature as triggers in the seasonality of *Delesseria sanguinea*. *Helgolander Meeresuntersuchungen*, **41**, 355-370.
- Kain, J.M., & Norton, T.A., 1990. Marine Ecology. In *Biology of the Red Algae*, (ed. K.M. Cole & Sheath, R.G.). Cambridge: Cambridge University Press.
- Kain, J.M., Drew, E.A. & Jupp, B.P., 1975. Light and the ecology of *Laminaria hyperborea* II. In *Proceedings of the Sixteenth Symposium of the British Ecological Society, 26-28 March 1974. Light as an Ecological Factor: II* (ed. G.C. Evans, R. Bainbridge & O. Rackham), pp. 63-92. Oxford: Blackwell Scientific Publications.
- Karsten, U., 2007. Research note: salinity tolerance of Arctic kelps from Spitsbergen. *Phycological Research*, **55** (4), 257-262.
- Kinne, O., 1977. International Helgoland Symposium "Ecosystem research": summary, conclusions and closing. *Helgoländer Wissenschaftliche Meeresuntersuchungen*, **30**(1-4), 709-727.
- Kitching, J., 1941. Studies in sublittoral ecology III. *Laminaria* forest on the west coast of Scotland; a study of zonation in relation to wave action and illumination. *The Biological Bulletin*, **80** (3), 324-337
- Kregting, L., Blight, A., Elsässer, B. & Savidge, G., 2013. The influence of water motion on the growth rate of the kelp *Laminaria hyperborea*. *Journal of Experimental Marine Biology and Ecology*, **448**, 337-345.
- Kruuk, H., Wansink, D. & Moorhouse, A., 1990. Feeding patches and diving success of otters, *Lutra lutra*, in Shetland. *Oikos*, **57**, 68-72.
- Lüning, K., 1979. Growth strategy of three *Laminaria* species (Phaeophyceae) inhabiting different depth zones in the sublittoral region of Hegoland (North Sea). *Marine Ecological Progress Series*, **1**, 195-207.
- Lang, C. & Mann, K., 1976. Changes in sea urchin populations after the destruction of kelp beds. *Marine Biology*, **36** (4), 321-326.
- Lein, T.E, Sjutun, K. & Wakili, S., 1991. Mass - occurrence of a brown filamentous endophyte in the lamina of the kelp *Laminaria hyperborea* (Gunnerus) Foslie along the south western coast of Norway *Sarsia*, **76**, 187-193.
- Leinaas, H.P. & Christie, H., 1996. Effects of removing sea urchins (*Strongylocentrotus droebachiensis*): stability of the barren state and succession of kelp forest recovery in the east Atlantic. *Oecologia*, **105**(4), 524-536.
- Lobban, C.S. & Harrison, P.J., 1997. *Seaweed ecology and physiology*. Cambridge: Cambridge University Press.
- Lüning, K., 1990. *Seaweeds: their environment, biogeography, and ecophysiology*: John Wiley & Sons.
- Lüning, K., 1980. Critical levels of light and temperature regulating the gametogenesis of three laminaria species (Phaeophyceae). *Journal of Phycology*, **16**, 1-15.
- Lyngby, J.E. & Mortensen, S.M., 1996. Effects of dredging activities on growth of *Laminaria saccharina*. *Marine Ecology, Pubblicazioni della Stazione Zoologica di Napoli I*, **17**, 345-354.

- Müller, R., Laepple, T., Bartsch, I. & Wiencke, C., 2009. Impact of oceanic warming on the distribution of seaweeds in polar and cold-temperate waters. *Botanica Marina*, **52** (6), 617-638.
- Mann, K.H., 1982. Kelp, sea urchins, and predators: a review of strong interactions in rocky subtidal systems of eastern Canada, 1970-1980. *Netherlands Journal of Sea Research*, **16**, 414-423.
- Miller III, H.L., Neale, P.J. & Dunton, K.H., 2009. Biological weighting functions for UV inhibition of photosynthesis in the kelp *Laminaria hyperborea* (Phaeophyceae) 1. *Journal of Phycology*, **45** (3), 571-584.
- Moore, P.G., 1973a. The kelp fauna of north east Britain I. Function of the physical environment. *Journal of Experimental Marine Biology and Ecology*, **13**, 97-125.
- Moore, P.G., 1973b. The kelp fauna of north east Britain. II. Multivariate classification: turbidity as an ecological factor. *Journal of Experimental Marine Biology and Ecology*, **13**, 127-163.
- Moore, P.G., 1978. Turbidity and kelp holdfast Amphipoda. I. Wales and S.W. England. *Journal of Experimental Marine Biology and Ecology*, **32**, 53-96.
- Moore, P.G., 1985. Levels of heterogeneity and the amphipod fauna of kelp holdfasts. In *The Ecology of Rocky Coasts: essays presented to J.R. Lewis, D.Sc.* (ed. P.G. Moore & R. Seed), 274-289. London: Hodder & Stoughton Ltd.
- Moy, F., Alve, E., Bogen, J., Christie, H., Green, N., Helland, A., Steen, H., Skarbøvik, E. & Stålnacke, P., 2006. Sugar Kelp Project: Status Report No 1. *SFT Report TA-2193/2006, NIVA Report 5265 (in Norwegian, with English Abstract)*, 36 pp.
- Moy, F.E. & Christie, H., 2012. Large-scale shift from sugar kelp (*Saccharina latissima*) to ephemeral algae along the south and west coast of Norway. *Marine Biology Research*, **8** (4), 309-321.
- Müller, U., 1999. The vertical zonation of adpressed diatoms and other epiphytic algae on *Phragmites australis*. *European Journal of Phycology*, **34**, 487-496.
- NBN, 2015. National Biodiversity Network 2015(20/05/2015). <https://data.nbn.org.uk/>
- Nichols, D., 1981. The Cornish Sea-urchin Fishery. *Cornish Studies*, **9**, 5-18.
- Norderhaug, K., 2004. Use of red algae as hosts by kelp-associated amphipods. *Marine Biology*, **144** (2), 225-230.
- Norderhaug, K.M. & Christie, H.C., 2009. Sea urchin grazing and kelp re-vegetation in the NE Atlantic. *Marine Biology Research*, **5** (6), 515-528.
- Norderhaug, K.M., Christie, H. & Fredriksen, S., 2007. Is habitat size an important factor for faunal abundances on kelp (*Laminaria hyperborea*)? *Journal of Sea Research*, **58** (2), 120-124.
- Nordheim, van, H., Andersen, O.N. & Thissen, J., 1996. Red lists of Biotopes, Flora and Fauna of the Trilateral Wadden Sea area, 1995. *Helgolander Meeresuntersuchungen*, **50** (Suppl.), 1-136.
- Norton, T.A. & South, G.R., 1969. Influence of reduced salinity on the distribution of two laminarian algae. *Oikos*, **20**, 320-326
- Norton, T.A., 1970. Synopsis of biological data on *Saccorhiza polyschides*. *FAO Fisheries Synopsis*, No. 83, 1-35.
- Norton, T.A., 1978. The factors influencing the distribution of *Saccorhiza polyschides* in the region of Lough Ine. *Journal of the Marine Biological Association of the United Kingdom*, **58**, 527-536.
- Norton, T.A., 1992. Dispersal by macroalgae. *British Phycological Journal*, **27**, 293-301.
- Norton, T.A., Hiscock, K. & Kitching, J.A., 1977. The Ecology of Lough Ine XX. The *Laminaria* forest at Carrigathorna. *Journal of Ecology*, **65**, 919-941.
- Novaczek, I., Bird, C. & McLachlan, J., 1986. The effect of temperature on development and reproduction in *Chorda filum* and *C. tomentosa* (Phaeophyta, Laminariales) from Nova Scotia. *Canadian Journal of Botany*, **64** (11), 2414-2420.
- O'Brien, P.J. & Dixon, P.S., 1976. Effects of oils and oil components on algae: a review. *British Phycological Journal*, **11**, 115-142.
- Parke, M., 1948. Studies on British Laminariaceae. I. Growth in *Laminaria saccharina* (L.) Lamour. *Journal of the Marine Biological Association of the United Kingdom*, **27**, 651-709.
- Pedersen, M.F., Nejrup, L.B., Fredriksen, S., Christie, H. & Norderhaug, K.M., 2012. Effects of wave exposure on population structure, demography, biomass and productivity of the kelp *Laminaria hyperborea*. *Marine Ecology Progress Series*, **451**, 45-60.
- Penfold, R., Hughson, S., & Boyle, N., 1996. *The potential for a sea urchin fishery in Shetland*. <http://www.nafc.ac.uk/publish/note5/note5.htm>, 2000-04-14
- Peteiro, C. & Freire, O., 2013. Biomass yield and morphological features of the seaweed *Saccharina latissima* cultivated at two different sites in a coastal bay in the Atlantic coast of Spain. *Journal of Applied Phycology*, **25**(1), 205-213.
- Peters, A.F. & Schaffelke, B., 1996. *Streblonema* (Ectocarpales, Phaeophyceae) infection in the kelp *Laminaria saccharina* in the western Baltic. *Hydrobiologia*, **326/327**, 111-116.
- Philippart, C.J., Anadón, R., Danovaro, R., Dippner, J.W., Drinkwater, K.F., Hawkins, S.J., Oguz, T., O'Sullivan, G. & Reid, P.C., 2011. Impacts of climate change on European marine ecosystems: observations, expectations and indicators. *Journal of Experimental Marine Biology and Ecology*, **400** (1), 52-69.
- Raffaelli, D. & Hawkins, S., 1999. *Intertidal Ecology* 2nd edn.. London: Kluwer Academic Publishers.
- Read, P.A., Anderson, K.J., Matthews, J.E., Watson, P.G., Halliday, M.C. & Shiells, G.M., 1983. Effects of pollution on the benthos of the Firth of Forth. *Marine Pollution Bulletin*, **14**, 12-16.
- Reed, R.H. & Russell, G., 1978. Salinity fluctuations and their influence on "bottle brush" morphogenesis in *Enteromorpha*

- intestinalis (L.) Link. *British Phycological Journal*, **13**, 149-153.
- Rinde, E. & Sjøtun, K., 2005. Demographic variation in the kelp *Laminaria hyperborea* along a latitudinal gradient. *Marine Biology*, **146** (6), 1051-1062.
- Rostron, D.M. & Bunker, F. St P.D., 1997. An assessment of sublittoral epibenthic communities and species following the Sea Empress oil spill. A report to the Countryside Council for Wales from Marine Seen & Sub-Sea Survey., Countryside Council for Wales, Bangor, CCW Sea Empress Contact Science, no. 177.
- Sanderson, W.G., Holt, R.H.F., Kay, L., Wyn, G. & McMath, A.J., 2001. *The establishment of a programme of surveillance and monitoring for judging the condition of the features of Pen Llyn a'r Sarnau cSAC.*, Unpublished. Countryside Council for Wales, Bangor. (CCW Contract Science Report No. 280).
- Schiel, D.R. & Foster, M.S., 1986. The structure of subtidal algal stands in temperate waters. *Oceanography and Marine Biology: an Annual Review*, **24**, 265-307.
- Sheppard, C.R.C., Bellamy, D.J. & Sheppard, A.L.S., 1980. Study of the fauna inhabiting the holdfasts of *Laminaria hyperborea* (Gunn.) Fosl. along some environmental and geographical gradients. *Marine Environmental Research*, **4**, 25-51.
- Sivertsen, K., 1997. Geographic and environmental factors affecting the distribution of kelp beds and barren grounds and changes in biota associated with kelp reduction at sites along the Norwegian coast. *Canadian Journal of Fisheries and Aquatic Sciences*, **54**, 2872-2887.
- Sjøtun, K., Christie, H. & Helge Fosså, J., 2006. The combined effect of canopy shading and sea urchin grazing on recruitment in kelp forest (*Laminaria hyperborea*). *Marine Biology Research*, **2** (1), 24-32.
- Sjøtun, K. & Schoschina, E.V., 2002. Gametophytic development of *Laminaria* spp. (Laminariales, Phaeophyta) at low temperatures. *Phycologia*, **41**, 147-152.
- Sjøtun, K., Fredriksen, S., Lein, T.E., Runess, J. & Sivertsen, K., 1993. Population studies of *Laminaria hyperborea* from its northern range of distribution in Norway. *Hydrobiologia*, **260/261**, 215-221.
- Smale, D.A., Burrows, M.T., Moore, P., O'Connor, N. & Hawkins, S.J., 2013. Threats and knowledge gaps for ecosystem services provided by kelp forests: a northeast Atlantic perspective. *Ecology and evolution*, **3** (11), 4016-4038.
- Smale, D.A., Wernberg, T., Yunnice, A.L. & Vance, T., 2014. The rise of *Laminaria ochroleuca* in the Western English Channel (UK) and comparisons with its competitor and assemblage dominant *Laminaria hyperborea*. *Marine ecology*.
- Smith, J.E. (ed.), 1968. 'Torrey Canyon'. *Pollution and marine life*. Cambridge: Cambridge University Press.
- Somerfield, P.J. & Warwick, R.M., 1999. Appraisal of environmental impact and recovery using *Laminaria* holdfast faunas. *Sea Empress, Environmental Evaluation Committee., Countryside Council for Wales, Bangor, CCW Sea Empress Contract Science, Report no. 321*.
- South, G.H. & Burrows, E.M., 1967. Studies on marine algae of the British Isles. 5. *Chorda filum* (L.) Stckh. *British Phycological Bulletin*, **3**, 379-402.
- Staehr, P.A. & Wernberg, T., 2009. Physiological responses of *Ecklonia radiata* (Laminariales) to a latitudinal gradient in ocean temperature. *Journal of Phycology*, **45**, 91-99.
- Steneck, R.S., Graham, M.H., Bourque, B.J., Corbett, D., Erlandson, J.M., Estes, J.A. & Tegner, M.J., 2002. Kelp forest ecosystems: biodiversity, stability, resilience and future. *Environmental conservation*, **29** (04), 436-459.
- Steneck, R.S., Vavrinec, J. & Leland, A.V., 2004. Accelerating trophic-level dysfunction in kelp forest ecosystems of the western North Atlantic. *Ecosystems*, **7** (4), 323-332.
- Thompson, G.A. & Schiel, D.R., 2012. Resistance and facilitation by native algal communities in the invasion success of *Undaria pinnatifida*. *Marine Ecology, Progress Series*, **468**, 95-105.
- Thompson, R.S. & Burrows, E.M., 1984. The toxicity of copper, zinc and mercury to the brown macroalga *Laminaria saccharina*. In *Ecotoxicological testing for the marine environment* (ed. G. Persoone, E. Jaspers, & C. Claus), Vol. 2, pp. 259-269. Ghent: Laboratory for biological research in aquatic pollution, State University of Ghent.
- Vadas, R.L. & Elner, R.W., 1992. *Plant-animal interactions in the north-west Atlantic*. In *Plant-animal interactions in the marine benthos*, (ed. D.M. John, S.J. Hawkins & J.H. Price), 33-60. Oxford: Clarendon Press. [Systematics Association Special Volume, no. 46].
- Vadas, R.L., Johnson, S. & Norton, T.A., 1992. Recruitment and mortality of early post-settlement stages of benthic algae. *British Phycological Journal*, **27**, 331-351.
- Van den Hoek, C., 1982. The distribution of benthic marine algae in relation to the temperature regulation of their life histories. *Biological Journal of the Linnean Society*, **18**, 81-144.
- Vost, L.M., 1983. The influence of *Echinus esculentus* grazing on subtidal algal communities. *British Phycological Journal*, **18**, 211.
- Werner, A. & Kraan, S., 2004. Review of the potential mechanisation of kelp harvesting in Ireland. *Marine Environment and Health Series*, (No. 17).
- Whittick, A., 1983. Spatial and temporal distributions of dominant epiphytes on the stipes of *Laminaria hyperborea* (Gunn.) Fosl. (Phaeophyta: Laminariales) in S.E. Scotland. *Journal of Experimental Marine Biology and Ecology*, **73**, 1-10.
- Wilce, R.T., 1959. *The Marine Algae of the Labrador Peninsula and Northwest Newfoundland: Ecology and Distribution*: National Museum of Canada.
- Wotton, D.M., O'Brien, C., Stuart, M.D. & Fergus, D.J., 2004. Eradication success down under: heat treatment of a sunken trawler

to kill the invasive seaweed *Undaria pinnatifida*. *Marine Pollution Bulletin*, **49** (9), 844-849.