

1 Research article to *Marine Ecology Progress Series* – accepted 04/02/2017

2

3

4 **Regional-scale variability in the response of benthic**
5 **macroinvertebrate assemblages to a marine heatwave**

6

7 Dan A. Smale^{1,2*}, Thomas Wernberg² and Mathew A. Vanderklift³

8

9 ¹Marine Biological Association of the United Kingdom, The Laboratory, Citadel Hill,
10 Plymouth, PL1 2PB, United Kingdom

11 ²UWA Oceans Institute and School of Plant Biology, University of Western Australia, 35
12 Stirling Highway, Crawley 6009 WA, Australia

13 ³CSIRO Oceans & Atmosphere, Floreat, Western Australia 6014, Australia

14

15

16

17 *Running head: extreme warming event and temperate reef fauna*

1 ABSTRACT: Extreme climatic events are predicted to increase in severity as a consequence
2 of anthropogenic climate change. In marine ecosystems, the importance of marine heatwaves
3 (MHWs) – discrete periods of anomalously high sea temperatures - is gaining recognition. In
4 2011, the highest-magnitude MHW ever recorded impacted the west coast of Australia
5 (southeast Indian Ocean). The MHW was associated with widespread mortality of habitat-
6 forming species, including corals and kelps, and structural changes in assemblages of
7 macroalgae and fish. However, the responses of benthic macroinvertebrate assemblages have
8 not yet been fully documented. Here, we resurveyed 2 subtidal habitat types (reef ‘flats’ and
9 ‘slopes’) at 4 locations (spanning >800 km of coastline and >6° of latitude) during the period
10 1999-2015 to examine the impacts of the 2011 MHW on herbivorous macroinvertebrates (i.e.
11 sea urchins, gastropod molluscs). Responses to the MHW varied with latitude; at our warmest
12 study location abundances were severely depleted whereas no effects were detected at the
13 coolest location. Across the entire study region subtle but significant shifts in assemblage
14 structure were observed due to decreased abundances of more southerly-distributed species
15 (i.e. ‘cool’ affinity) and increased abundances of several more northerly-distributed species
16 (i.e. ‘warm’ affinity). The 2011 MHW has had profound effects on the marine biota off the
17 west coast of Australia, across multiple trophic levels and taxonomic groups. Here, as in many
18 other regions, contemporary warming events are superimposed onto gradual warming trends,
19 increasing the likelihood of abrupt changes in ecosystem structure and functioning.

20 KEY WORDS: Benthic herbivores; Extreme climatic events; Leeuwin Current; Mobile
21 macro-invertebrates; Southeast Indian Ocean; Southwest Australia; Species distributions;
22 Temperature variability

23

1 INTRODUCTION

2 Climatic variability, including the frequency and magnitude of extreme climatic events, is
3 predicted to increase as a direct consequence of anthropogenic climate change (Meehl &
4 Tebaldi 2004, Rahmstorf & Coumou 2011, IPCC 2012). Natural climate variability is now
5 superimposed onto decadal warming trends in most regions, increasing the likelihood of
6 discrete climatic events becoming 'extreme' or 'anomalous' (Hansen et al. 2012, Trenberth
7 2012). Such events, which include heatwaves, droughts, storms and floods, can affect both
8 terrestrial and marine ecosystems and cause high mortality (Garrabou et al. 2009, Marba &
9 Duarte 2010) deleterious impacts on populations (Van De Pol et al. 2010, Smale & Wernberg
10 2013) and a reconfiguration of communities (Thibault & Brown 2008, Wernberg et al. 2013,
11 Wernberg et al. 2016).

12 Marine heatwaves (MHWs) are broadly defined as discrete prolonged periods when sea
13 temperatures are anomalously high relative to long-term records (Hobday et al. 2016). MHWs,
14 which can be caused by a range of oceanographic and atmospheric processes, are gaining
15 recognition as widespread and potent drivers of change in marine ecosystems (Wernberg et al.
16 2013, Hobday et al. 2016). Indeed, the number of days of anomalously high seawater
17 temperatures has significantly increased along 30% of the world's coastlines in the last 30 years
18 (Lima & Wethey 2012), while several 'high profile' warming events have had far-reaching
19 ecological impacts (Hobday et al. 2016). For example, the European meteorological heatwaves
20 of 2003 and 2006 elevated seawater temperatures in the Mediterranean Sea, which in turn
21 caused widespread mortality, shifts in species' distributions and declines in local marine
22 biodiversity (Garrabou et al. 2009, Lejeusne et al. 2009, Marba & Duarte 2010). More recently,
23 the El Niño-driven warming event of 2015-2016 has devastated coral reefs at a global scale
24 (Normile 2016). It is clear that prolonged periods of extremely high seawater temperatures

1 affect processes across all biological scales, from genes (Bergmann et al. 2010) to organisms
2 (Diaz-Almela et al. 2007) to ecosystems (Wernberg et al. 2016).

3 In the austral summer of 2010/2011, the southeast Indian Ocean experienced an extreme
4 warming event, during which seawater temperatures were the highest on record (~30 years for
5 satellite-derived SSTs and ~140 years for reconstructed SSTs, see Wernberg et al. 2013).
6 During the MHW, warming anomalies of 2-4°C persisted for around two months across >2000
7 km of temperate and subtropical coastline (Feng et al. 2013, Pearce & Feng 2013, Wernberg et
8 al. 2013). At the MHW's peak in late February/March 2011, warming anomalies of up to 5°C
9 were observed at multiple coastal locations (Rose et al. 2012, Feng et al. 2013, Pearce & Feng
10 2013). The MHW was associated with unusually strong La Niña conditions, which increased
11 the flow of the region's main ocean current (the Leeuwin Current, 'LC') and the transfer of
12 tropical warm water polewards, and was superimposed onto a decadal scale warming trend in
13 the southeast Indian Ocean (Pearce & Feng 2007).

14 The MHW had wide-ranging consequences for marine ecosystems along the western coastline
15 of Australia, which is a global hotspot of marine diversity and endemism (Tittensor et al. 2010,
16 Bennett et al. 2015a). Unprecedented rates of coral bleaching and mortality were recorded
17 across >1000 km of tropical and subtropical coastline (Moore et al. 2012, Depczynski et al.
18 2013), including at high latitude locations that are historically resistant to bleaching events
19 (Smale & Wernberg 2012). Significant declines in the abundance and geographical extent of
20 habitat-forming macroalgae were observed (Smale & Wernberg 2013, Wernberg et al. 2013,
21 Wernberg et al. 2016), as were changes in fish abundances and species composition (Wernberg
22 et al. 2013, Bennett et al. 2015b, Wernberg et al. 2016) and mass mortalities of commercially-
23 important finfish and shellfish (Pearce et al. 2011, Caputi et al. 2016). 'Warm-temperate'
24 locations situated within the tropical-temperate transition zone were profoundly impacted, as
25 they suffered widespread loss of cool-water adapted habitat-forming species (kelps and large

1 fucoids), which were unable to cope with the extreme temperatures experienced during the
2 MHW (Smale & Wernberg 2013, Wernberg et al. 2013, Wernberg et al. 2016).

3 Mobile macroinvertebrates such as echinoderms and molluscs play key roles in the trophic
4 ecology of temperate Australia (Shepherd & Edgar 2013), yet the impact of the 2011 MHW on
5 their distributions and abundances has not yet been analysed in detail. Within the current
6 biogeographical context of southwestern Australia, mobile macro-invertebrates are fairly low
7 in diversity and abundance compared with many other temperate and polar ecosystems, and
8 exhibit highly patchy spatial distributions (Vanderklift & Kendrick 2004, Wernberg et al. 2008,
9 Levitus et al. 2012, Azzarello et al. 2014, Smale & Wernberg 2014). Despite their relatively
10 low diversity and abundances, and an apparent lack of grazing 'fronts' and urchin 'barrens' in
11 the region, densities can be locally high (>8 large inds.m⁻², see Vanderklift & Kendrick 2004,
12 Azzarello et al. 2014) and mobile macroinvertebrates represent a conspicuous and
13 characteristic component of kelp forest communities (Vanderklift & Kendrick 2004, Wernberg
14 et al. 2008, Azzarello et al. 2014). Moreover, key species of sea urchins and molluscs may play
15 a critical role in the food web (Vanderklift et al. 2006, Lozano-Montes et al. 2011, MacArthur
16 et al. 2011), linking primary productivity (e.g. drifting and attached macroalgae) to higher
17 trophic levels (e.g. lobsters, finfish).

18 Off southwest Australia, the reef-associated benthic macroinvertebrate fauna has a
19 predominantly temperate affinity (Vanderklift & Kendrick 2004); the most abundant sea urchin
20 in the region is the purple sea urchin *Heliocidaris erythrogramma* (Valenciennes 1846,
21 hereafter '*Heliocidaris*'), which is widely distributed across southern Australia (Keesing 2001,
22 Smale & Wernberg 2014). The sea urchin *Phyllacanthus irregularis* (Mortensen 1928,
23 hereafter '*Phyllacanthus*'), and the large turbinid gastropod *Lunella torquatus* (Gmelin 1791,
24 recently synonymised with *Turbo torquatus*, hereafter '*Lunella*') are also common, widespread
25 and have cool-temperate affinities. The sea urchin *Centrostephanus tenuispinus* (Clarke 1914,

1 hereafter '*Centrostephanus*') has a warm-temperate distribution (Wernberg et al. 2016), while
2 tropical warm-water species such as the sea urchin *Tripneustes gratilla* (Linnaeus 1758,
3 hereafter '*Tripneustes*') and the cowry gastropod *Monetaria caputserpentis* have occasionally
4 been recorded within kelp forest communities in southwestern Australia (authors pers. obs.).
5 The broad-scale affinities and geographical distributions of common macroinvertebrates
6 observed in previous surveys are shown in Table 1. As such, inter-specific variation in
7 biogeographic and thermal affinities may make some populations more susceptible to
8 temperature variability, such as that experienced during the 2011 MHW.

9 Here, we conducted geographically extensive surveys and used historical data to test the
10 following hypotheses (1) that the MHW significantly altered the structure of macroinvertebrate
11 assemblages on subtidal reefs in southwest Australia. We also hypothesised (2) that the
12 abundances of more southerly-distributed cool-temperate species would be lower after the
13 MHW, especially at our warmest study locations where thermal physiological tolerances may
14 have been exceeded. Conversely, we predicted that (3) the abundances of more northerly-
15 distributed warm-temperate/tropical macroinvertebrates would be higher after the MHW,
16 particularly at our warmest study locations situated within the tropical-temperate transition
17 zone.

18 **MATERIALS AND METHODS**

19

20 **Study region**

21

22 The extensive coastline of southwestern Australia is characterized by widespread subtidal
23 rocky reef habitat that supports highly productive, diverse and spatially extensive benthic
24 communities, which are generally dominated by the kelp *Ecklonia radiata* in shallow waters
25 (i.e. <30 m depth). We examined the abundances of benthic macroinvertebrates on kelp-
26 dominated rocky reef habitats within 4 locations off southwest Australia; Hamelin Bay (34.2°S,

1 115.0°E), Marmion Lagoon (31.8°S, 115.7°E), Jurien Bay (30.2S, 115.0°E) and Kalbarri
2 (27.4°S, 114.1°E). Adjacent locations were situated >200 km apart (Fig. 1) and the study
3 encompassed ~6° latitude and ~800 km of southwest Australian coastline (southeast Indian
4 Ocean). All locations were moderately exposed to the oceanic swell systems that influence the
5 ecology and geomorphology of the region (Searle & Semeniuk 1985, Smale et al. 2011). The
6 study locations encompassed a temperature gradient of ~3°C and fall within a larger regional-
7 scale oceanic temperature gradient that characterizes the west coast of Australia (Fig. 1).
8 Average summer sea temperatures ranged from 20.3°C at Hamelin to 23.2°C at Kalbarri (see
9 Smale & Wernberg 2009, for detailed climatology of the region). The coastline is strongly
10 influenced by the LC which originates in the Indo-Pacific and flows polewards along the coast,
11 before deviating eastwards into the Great Australian Bight (Pearce 1991, Smith et al. 1991).
12 The LC transports tropical (and subtropical) dispersal stages of marine flora and fauna and
13 warm, nutrient-poor water polewards (Ayvazian & Hyndes 1995, Caputi et al. 1996, Smale &
14 Wernberg 2009).

15

16 **Field surveys**

17 For each location, existing data on the abundance of mobile invertebrates were collated from
18 published studies (Vanderklift & Kendrick 2004, Wernberg et al. 2008) and from authors'
19 unpublished surveys that used identical survey methods. These studies were used to identify
20 sites within each location that could be resurveyed to assess the impacts of the MHW. Multiple
21 comparable study sites, >1 km apart from one another, were selected at random from a larger
22 possible pool for resurveying. All study sites were characterised by extensive limestone reef
23 habitats, at 6-16 m depth, and supported benthic assemblages typical of the wider region (Smale
24 et al. 2010). Two habitat types were defined *a priori*; flat reef platforms (hereafter 'flats') and
25 vertical or steeply-sloping rock faces (hereafter 'slopes'). These habitat types were treated

1 separately because (i) they support distinct invertebrate assemblages (Vanderklift & Kendrick
2 2004), and (ii) the quantity of available data and the most suitable study sites for resurveying
3 differed between habitat types. For reef flats, 5 sites were selected from each of the 4 locations
4 for resurveying, whereas reef slopes were resurveyed at 3 sites within 3 locations (existing data
5 were not available for reef slopes at Kalbarri). Before the MHW, sites were surveyed between
6 1 and 3 times between 1999 and 2006 (Table S1). After the MHW, new targeted surveys were
7 conducted for the current study at all sites 3 times (in 2013, 2014 and 2015), with the exception
8 of some sites at Hamelin which were not surveyed in 2014/2015 (Table S1). All surveys were
9 conducted during the austral summer (full details provided in Table S1). Previous research in
10 the region has shown that short-term variability (i.e. seasons to years) in invertebrate
11 assemblage structure is minimal and that densities of dominant macroinvertebrates are
12 generally stable over periods of months to years (Vanderklift & Kendrick 2004, Smale &
13 Wernberg 2014). For example, an examination of *Heliocidaris* abundances from 3 consecutive
14 pre-MHW survey years (between 1999 and 2001) on reef slopes at Marmion indicated minimal
15 inter-annual variability (Fig S1). There was no discernible intensification of localized
16 anthropogenic stressors, such as increased pollution, sedimentation or harvesting, which may
17 have confounded any effects of the MHW, at any of the locations during the study period.
18 Human populations in nearby settlements are relatively small (with the exception of the Perth
19 Metropolitan Area adjacent to our sites at Marmion, which fall within a designated Marine
20 Park) and localized anthropogenic impacts that could potentially confound temperature effects
21 were deemed to be minimal.

22 All mobile macroinvertebrates (>20 mm) within 5 replicate 5 x 1 m belt transects were counted
23 on SCUBA (by the authors) at each study site. Transects were positioned haphazardly and
24 placed >5 m apart from one another. In total, counts were obtained from 685 transects (395
25 completed before the MHW and 290 after the MHW) covering ~3425 m² of subtidal reef
26 habitat (~1975 m² before the MHW and ~1450 m² after the MHW).

1 **Statistical analysis**

2 Differences in invertebrate assemblage structure between pre-MHW and post-MHW surveys
3 was examined with permutational multivariate analysis of variance (PERMANOVA, see
4 Anderson 2001), using PRIMER 6 software (Clarke & Warwick 2001) with the
5 PERMANOVA add-on (Anderson et al. 2008). As macroinvertebrate abundance values per
6 transect were often low, the five transects completed per site/year combination were first
7 pooled (to generate abundance values per 25 m²) so that a single value was used for each site-
8 year combination. Initially a ‘global’ analysis was performed on data from all locations, using
9 an orthogonal model with the two factors ‘location’ (fixed factor) and ‘MHW’ (fixed factor);
10 each habitat type was analysed separately. Permutations were based on a similarity matrix
11 generated from Bray-Curtis similarity matrix of square-root transformed pooled densities
12 (4999 permutations under a reduced model). As highly-significant ($P \leq 0.001$) interactions
13 between location and MHW were detected for both habitat types (Table S2, Fig. S2), separate
14 *a priori* planned contrasts for each location were conducted to test the prediction that years
15 following the MHW would be distinct from those before the MHW (using the same similarity
16 matrix and data transformation as above, and 4999 unrestricted permutations). In all cases,
17 dummy variables (equal to the lowest transformed abundance value; ‘1’) were included in the
18 similarity matrices to alleviate the overpowering influence of transects with zero abundance
19 values (Clarke & Warwick 2001). Where a significant difference was detected, a SIMPER
20 analysis was performed to determine which taxa contributed most to the observed dissimilarity.
21 PCO plots for each location and habitat type were constructed to examine multivariate
22 partitioning before and after the MHW.

23 Temporal trends in total abundance (TA), taxon richness (TR) and the abundances of dominant
24 species were examined with univariate permutation-based ANOVA (Anderson et al. 2008),
25 using the planned contrasts described above (all response variables exhibited a significant

1 Location x MHW interaction term in initial global analyses and so each location was analysed
2 separately). Permutations were based on Euclidean distances between untransformed
3 abundance data (using 4999 unrestricted permutations).

4 **RESULTS**

5 **The marine heatwave of 2010/11**

6 At all locations temperature anomalies between +2°C to +3°C persisted for two months (Fig.
7 1) and absolute sea surface temperatures in the region were the highest on record (Feng et al.
8 2013, Pearce & Feng 2013, Wernberg et al. 2013). In addition to the extreme warming observed
9 in 2010/2011, sea surface temperatures in early 2012 and (to a lesser extent) early 2013 were
10 also higher than the climatological mean for each location (Fig. 1).

11 **Assemblage-level responses**

12 On reef flats, the composition of mobile invertebrate assemblages was not obviously impacted
13 by the MHW at the coolest study locations (PCO plots showed no clear partitioning in
14 composition before and after the MHW at Hamelin or Marmion: Fig. 2) but were clearly altered
15 by the MHW at the warmest locations (partitioning was evident at Jurien and major shifts in
16 composition occurred at Kalbarri: Fig. 2). Multivariate statistical tests supported inferences
17 from visual inspections of PCO plots, as *a priori* planned contrasts indicated that pre- and post-
18 MHW assemblages at Jurien and Kalbarri were significantly different (Table S3). SIMPER
19 analysis indicated that the observed dissimilarities at Jurien were principally related to lower
20 post-MHW abundances of *Heliocidaris* and *Lunella* and higher abundances of
21 *Centrostephanus* (Table S4). At Kalbarri, the gastropods *Lunella*, *Dicathais orbita* and
22 *Astralium* spp., which were not recorded after the MHW, were the principal contributors to the
23 observed dissimilarities between pre and post-MHW assemblages (Table S4).

1 On reef slopes, PCO plots indicated that assemblages at Hamelin showed no obvious
2 differences in composition before and after the MHW, whereas partitioning between pre- and
3 post-MHW assemblages was observed at Marmion and Jurien (Fig. 3). These observations
4 were supported by PERMANOVA, as pre and post-MHW assemblages at Hamelin were
5 statistically similar but significant differences in composition were observed at Marmion and
6 Jurien (Table S5). SIMPER analysis indicated that differences at Marmion were related to
7 higher post-MHW abundances of *Heliocidaris* and *Centrostephanus* and lower abundances of
8 the sea star *Petricia vernicina* (Table S6). At Jurien, the sea urchins *Centrostephanus*,
9 *Tripneustes* (both with higher abundances post-MHW) and *Phyllacanthus* (lower abundances
10 post-MHW) were the principal contributors to the observed dissimilarities between pre and
11 post-MHW assemblages (Table S6).

12 On reef flats total abundance (TA) and taxon richness (TR) did not vary significantly between
13 pre and post-MHW years at the 3 highest latitude locations (Hamelin, Marmion and Jurien, see
14 Fig 4). At Kalbarri, however, TA and TR were significantly lower after the MHW (Table S7)
15 to the extent that not a single macroinvertebrate individual was observed in any of the 75 post-
16 MHW transects (Fig. 4), which covered a habitat area of $\sim 375 \text{ m}^2$. On average at Kalbarri, TA
17 decreased from 2.3 ± 0.8 to $0 \text{ inds.}25 \text{ m}^{-2}$ and TR decreased from 1.3 ± 0.3 to $0 \text{ spp.}25 \text{ m}^{-2}$ (Fig.
18 4). On reef slopes, TA did not differ significantly before and after the MHW at any location
19 but TR was significantly lower at Jurien after the MHW (Table S8), decreasing from 5.0 ± 0.6
20 to $2.9 \pm 0.3 \text{ spp.}25 \text{ m}^{-2}$ (Fig. 4).

21 **Population-level responses**

22 On reef flats, *Heliocidaris* was the most abundant macroinvertebrate, reaching a maximum
23 average abundance of $8.8 \pm 3.0 \text{ inds.}25\text{m}^{-2}$ at Jurien (Fig. 5). The MHW had no statistically
24 significant effect on *Heliocidaris* abundances at Hamelin, Marmion and Jurien, and it was not
25 recorded at Kalbarri during any survey year (Fig. 5, Table S9). The two most common

1 gastropod taxa, *Lunella* and *Astraliium* spp. (*Astraliium tentorium* Thiele 1930 and *Astraliium*
2 *squamiferum* Koch 1844) were recorded at all locations before the MHW but were not recorded
3 at the warmest location, Kalbarri, after the MHW (Fig. 5). This marked post-MHW decline
4 was statistically significant for *Lunella* but not for *Astraliium* (Fig. 5, Table S9).

5 On reef slopes, *Heliocidaris* was again the most common macroinvertebrate and did not
6 respond significantly to the MHW (Fig. 6, Table S10). At Jurien, the abundance of the pencil
7 urchin *Phyllacanthus* was significantly lower after the MHW (Fig. 6, Table S10). The most
8 striking observation was the marked increases in the abundance of *Centrostephanus* at both
9 Marmion and Jurien (Fig. 6). Following the MHW, the average abundance of *Centrostephanus*
10 was ~15 times higher at Jurien and also significantly higher at Marmion, increasing from
11 complete absence in transects before the MHW to an average abundance of 1.9 ± 0.7 inds.25m²
12 following the event (Fig. 6, Table S10). A marked but statistically non-significant increase in
13 *Centrostephanus* abundance was also observed at Hamelin (Fig. 6, Table S10). The collector
14 urchin *Tripneustes* was not recorded in any pre-MHW transect but was recorded at some sites
15 at Jurien after the MHW, in 2013 and 2014 (Fig. 6). However, the planned contrast between
16 pre- and post-MHW years was not statistically significant because of high variability between
17 sites and years (*Tripneustes* was recorded at 2 sites in 2013, 1 site in 2014 and was absent in
18 2015), indicating that patterns were variable between sites and years.

19 Temporal shifts in the relative abundances of sea urchin species on reef slopes (i.e. the
20 percentage of all sea urchin individuals represented by each species, with all 3 sites per location
21 pooled) were also examined (Fig. 7). This analysis showed a consistent clear pattern of higher
22 relative abundance of *Centrostephanus* since the MHW at all 3 study locations (Fig. 7). For
23 example, at Jurien before the MHW *Centrostephanus* represented 3.5% of all sea urchins
24 recorded, yet by 2015 (4 years after the MHW) *Centrostephanus* represented 90.1% of all sea
25 urchin individuals. A similar trend was observed at Hamelin and Marmion (Fig. 7).

1 Furthermore, at Jurien the relative contributions of *Heliocidaris* and *Phyllacanthus* individuals
2 to the sea urchin assemblage was markedly lower following the MHW, partly as a consequence
3 of the higher abundances of *Tripneustes* (temporarily) and *Centrostephanus* (Fig. 7). The
4 relative abundances of *Heliocidaris* and *Phyllacanthus* at the other study locations were more
5 variable between years and showed no clear trend (Fig. 7).

6

7 **DICUSSION**

8

9 The 2011 MHW was extreme in terms of magnitude, duration and spatial extent (Feng et al.
10 2013, Wernberg et al. 2013). Our data unequivocally demonstrate that the MHW significantly
11 altered the composition of benthic macroinvertebrate assemblages on subtidal reefs in
12 southwest Australia, with the magnitude of impact inversely related to latitude (i.e. the warmest
13 locations were the hardest hit). At the coolest study location, Hamelin, the composition of
14 invertebrate assemblages on reef flats and slopes did not differ between pre and post-MHW
15 years. At the mid-latitude locations, Marmion and Jurien, changes in the relative abundances
16 of macroinvertebrate taxa led to significant alterations in species composition (on reef slopes
17 at Marmion and on both habitat types at Jurien), whereas major shifts in species composition
18 were observed at the lowest latitude location, Kalbarri. This aligns with the responses of fish
19 and macroalgae assemblages (Wernberg et al. 2013), which were impacted by the MHW at a
20 ‘warm’ location (Jurien) but not at a ‘cool’ location (Hamelin). These data support our first
21 hypothesis, that macroinvertebrate assemblage structure in southwest Australia was altered by
22 the 2011 MHW, although responses varied considerably between locations.

23

24 The most striking observation of the current study was the decimation of all benthic
25 macroinvertebrates at Kalbarri, which were completely absent after the MHW. The most
26 common mobile invertebrates at Kalbarri before the MHW were all large gastropods (the
27 turban shells *Lunella* and *Astraliium* spp. and the carnivorous muricid *Dicathais orbita* Gmelin

1 1791) which, although not abundant, were commonly recorded before the MHW, being
2 ubiquitous in all surveys prior to 2011. These species exhibit temperate distributions spanning
3 southern Australia, having likely evolved under cool, climatically-stable Tethyan conditions
4 (Williams 2007). Kalbarri is situated towards the equatorward limit of these species'
5 distributions and, although thermal tolerances for these species are unknown, it is very likely
6 that extreme temperatures experienced during the MHW had direct adverse physiological
7 effects and induced high mortality rates. During the MHW, there was 99% mortality of the
8 commercially-important gastropod *Haliotis roei* (Gray 1826, 'Roe's abalone') on inshore reefs
9 at Kalbarri, which represents the equatorward limit of this species' distribution (Caputi et al.
10 2016). The mass die-offs at Kalbarri were associated with 30°C temperatures, discoloured
11 water and (probably) depleted oxygen levels (Pearce et al. 2011), and deleterious impacts of
12 warming on *H. roei* populations further south in the Perth Metropolitan Area (i.e. near
13 Marmion) were also observed (Caputi et al. 2016). *Lunella* also decreased in abundance after
14 the MHW at Marmion and Jurien (although not significantly), providing further support for the
15 susceptibility of range edge populations to extreme warming.

16

17 In addition to direct thermal stress, it is possible that the indirect effects of loss of habitat and
18 food also affected invertebrate populations at Kalbarri and, to a lesser extent, Jurien. The MHW
19 had direct adverse effects on habitat-forming seaweeds such as the dominant kelp *Ecklonia*
20 *radiata*, which resulted in a 30-40% decline in total canopy cover in Jurien (Wernberg et al.
21 2013) and the extirpation of the large furoid *Scytothalia dorycarpa* at its range edge (Smale &
22 Wernberg 2013). At Kalbarri, habitat structure was dramatically impacted by the MHW, as the
23 spatial coverage of the canopy-forming kelp *Ecklonia radiata* decreased from ~75% of the
24 reef's surface (Wernberg et al. 2010) to complete absence after the MHW (Wernberg et al.
25 2016). It has been shown that *Lunella* has a high affinity with kelp cover, and that sharp
26 declines in *Lunella* abundance are associated with loss of kelp during ENSO events on the East

1 coast of Australia (Ettinger-Epstein & Kingsford 2008). Although *Lunella* and *Astraliium* spp.
2 do not primarily feed on kelp, preferring to consume filamentous or foliose algae (Ettinger-
3 Epstein & Kingsford 2008, Wernberg et al. 2008), canopy-forming macroalgae represent a
4 critical resource through shelter provision (Ettinger-Epstein & Kingsford 2008). As such, loss
5 of structural habitat may have indirectly impacted gastropod abundance, as loss of macroalgal
6 shelter can induce behavioural responses and increase vulnerability of invertebrates to
7 predators (Ettinger-Epstein & Kingsford 2008, Stoner 2009). Moreover, drifting kelp
8 fragments are an important food source for benthic macroinvertebrates in the region
9 (Vanderklift & Wernberg 2010), so a decline in food availability may have affected the
10 ecological performance of individuals and the structure of populations.

11

12 The post-MHW surveys were conducted 2-4 years after the 2011 event, with invertebrate
13 populations at Kalbarri showing no signs of recovery following apparent widespread mortality.
14 This is unsurprising, as recovery of the gastropod populations formerly recorded at Kalbarri
15 will likely be hampered for 2 reasons; (1) the larval duration for some of these species is
16 presumed to be fairly short (i.e. days to weeks) (Phillips 1969, Joll 1980), so that post-MHW
17 recovery will depend on proximity to source populations, and (2) source populations are likely
18 to be located at higher latitudes, downstream of the main poleward-flowing ocean current,
19 thereby reducing the likelihood of larval transport into impacted locations (Caputi et al. 1996).
20 As Kalbarri is situated towards the equatorward distribution limits for these cool-water species,
21 it is possible that the MHW has induced poleward range contractions (as with a temperate
22 seaweed, see Smale & Wernberg 2013, Wernberg et al. 2016), although additional surveys are
23 needed to confirm species' range shifts. In addition to gastropods at Kalbarri, abundances of
24 the pencil urchin *Phyllacanthus* were markedly lower on reef slope habitats at Jurien after the
25 MHW, which was a major contributor to the observed dissimilarity between pre and post-
26 MHW assemblages. *Phyllacanthus* has a cool-water temperate distribution with its

1 equatorward range edge estimated at the Abrolhos Islands, ~28.5°S (Marsh 1994). As such, its
2 absence at Kalbarri and post-MHW decline at Jurien may be related to recent warming, but
3 thermal tolerance experiments are needed to examine this further. However, we observed no
4 clear trend in the abundance of *Heliocidaris*, which has a similar temperate distribution to
5 *Phyllacanthus*, therefore indicating inter-specific variability in responses to the MHW (as has
6 been shown for seaweed and fish, see Wernberg et al. 2013). In summary, our second
7 hypothesis, which predicted lower post-MHW abundances of more southerly distributed cool-
8 water species, was partially supported as cool-water species at Kalbarri were decimated by the
9 MHW and some, but not all, cool water species exhibited a response at Jurien.

10

11 Our third hypothesis – that the relative abundance of more northerly distributed ‘warm-water’
12 taxa would increase after the MHW – received some support as the abundance of *Tripneustes*
13 notably increased at some sites at Jurien for the years immediately following the MHW.
14 *Tripneustes* is a warm-water ‘collector urchin’ that is widely distributed across the Indo-Pacific
15 and extended tropics, where it primarily feeds on drifting seagrass and macroalgae fragments
16 but can actively graze when per capita food supply is insufficient (Ogden et al. 1989, Valentine
17 & Edgar 2010). *Tripneustes* is notoriously ‘boom and bust’ and intense population outbreaks
18 have been observed in the temperate-tropical transition zone in eastern Australia, with
19 community-level consequences (Valentine & Edgar 2010). *Tripneustes* is common in
20 subtropical waters off Western Australia and, although it has occasionally been recorded
21 further poleward than Jurien (e.g. at Rottnest Island, Vanderklift personal observation), it was
22 extremely rare at all study locations and was not recorded in any transects completed before
23 the MHW. We suggest that the higher abundances of *Tripneustes* at Jurien in 2013 and 2014
24 was a consequence of the MHW for the following reasons: (1) the enhanced poleward flow of
25 the LC during the MHW would have increased larval supply into cooler locations (Feng et al.
26 2013, Wernberg et al. 2013); (2) temperatures experienced during the MHW in the Jurien Bay

1 region (i.e. 26-27°C, see Wernberg et al. 2013) would have been favourable for the
2 development of *Tripneustes* larvae (Sheppard Brennan et al. 2010); (3) *Tripneustes* larvae are
3 relatively long-lived and are generally released in the austral summer (Dworjanyn & Pirozzi
4 2008), which was co-incident with the MHW and the unusually early strengthening of the LC
5 (Pearce & Feng, 2013); and (4) the cohort of sea urchins observed in 2013 were similar in size
6 (test diameters of ~10-12 cm, Smale pers. obs), which according to growth rate estimates
7 (Bacolod & Dy 1986) would have coincided with a recruitment event during or soon after the
8 MHW. However, as no *Tripneustes* individuals were recorded in 2015 the proliferation of the
9 warmer-water species was short-lived, with no indication that the population at Jurien will
10 persist.

11

12 The hypothesis received limited support as there was no evidence of a proliferation of warm-
13 affinity macroinvertebrates at the northernmost location (Kalbarri), where reef habitats were
14 devoid of benthic macrofauna. On the other hand, the principal ‘winner’ of the ecological
15 disturbance was *Centrostephanus*, which increased in abundance by a factor of ~15 at Jurien
16 to outnumber *Heliocidaris* to become the most abundant sea urchin, and significantly increased
17 in abundance at Marmion following the MHW. *Centrostephanus* can be described as a ‘warm-
18 temperate’ species and its proliferation does therefore provide some support for the third
19 hypothesis. Although *Centrostephanus* exhibits a temperate distribution from South Australia
20 to mid-Western Australia, it is far more abundant towards the warm northern limit of its
21 distribution compared with the cooler southern parts of its range (Vanderklift & Kendrick 2004,
22 Wernberg et al. 2016). For example, an unpublished survey based on 90 habitat-scale transects
23 conducted across 18 similar reefs between South Australia (Adelaide) and Marmion in 2005/06
24 did not find a single *Centrostephanus* individual on these southern reefs (T. Wernberg
25 unpublished data). Moreover, its equatorward range edge extends further north than the other

1 sea urchin species (except *Tripneustes*), with the northernmost population recorded at ~25°S
2 (Marsh 1994, GBIF record 137025088).

3

4 Very little is known about the biology of *Centrostephanus tenuispinus*, but its warm-temperate
5 congener on the east coast of Australia, *Centrostephanus rodgersii*, has been extensively
6 studied in recent years (see Byrne & Andrew 2013 for review). *C. rodgersii* has recently
7 extended its range polewards into Tasmania, in response to increased temperature and a
8 strengthening of the East Australian Current, where it has overgrazed kelp forest habitat to
9 create widespread urchin barrens (Ling et al. 2008, Ling et al. 2009). *C. rodgersii* has long-
10 lived planktonic larvae that facilitates long distance dispersal (Byrne & Andrew 2013); it is
11 likely that *C. tenuispinus* also has the potential for widespread dispersal. Increasing abundance
12 of *C. tenuispinus* along the southwest coastline of Australia is congruent with the recent MHW
13 and the longer-term gradual warming trend in the region (Pearce & Feng 2007). Thermal
14 tolerance studies on *C. rodgersii* and *Heliocidaris* on the east coast of Australia would suggest
15 that their thermal windows for fertilisation, development, growth and survival do not differ
16 markedly (Byrne et al. 2010, Wolfe et al. 2013, Pecorino et al. 2014). As such, it is currently
17 unclear whether recent warming has directly (through physiological stress) or indirectly
18 (through temperature-mediated competitive interactions) favoured *C. tenuispinus* over
19 *Heliocidaris* in southwest Australia, and focussed experimental work is needed. It is also not
20 known whether *C. tenuispinus* on the west coast has the potential to modify kelp forest habitat
21 to the extent of its congener on the east coast of Australia.

22

23 In conclusion, the 2011 MHW has had profound effects on the marine biota along the southwest
24 coastline of Australia. Rapid changes in the abundance, distribution and condition of organisms
25 representing a wide range of taxonomic and trophic groups have been reported (Pearce et al.
26 2011, Moore et al. 2012, Smale & Wernberg 2012, Smale & Wernberg 2013, Wernberg et al.

1 2013, Caputi et al. 2016, Wernberg et al. 2016). This study has shown that the responses of
2 mobile macroinvertebrates assemblages to the warming event varied dramatically with latitude,
3 with greatest impact at the northernmost study locations, even though the magnitude of the
4 warming anomaly was consistent along the latitudinal gradient. Recent modelling approaches
5 based on species distributions and projected temperatures suggest that species' range
6 expansions will be more prevalent than range contractions under climate change scenarios
7 (García Molinos et al. 2016). However, in this 'extreme' example of warming, we primarily
8 observed loss of cooler-water macroinvertebrate species and less evidence for an influx or
9 proliferation of warmer-water species over the timescale of observation. In contrast, observed
10 responses of other taxonomic groups to MHWs, including seaweeds, fish and corals, have
11 included a proliferation of warm-water species (Wernberg et al. 2013, Wernberg et al. 2016).
12 Clearly, better understanding of variability between biogeographic regions and taxonomic
13 groups is needed to improve predictions the effects of climate change on marine ecosystems.

14 Coastal marine ecosystems along the vast and varied coastline of temperate Australia have
15 responded to longer-term gradual ocean warming and concurrent stressors in complex and
16 unpredictable ways (Wernberg et al. 2011). As short-term climatic variability is superimposed
17 onto longer-term gradual warming trends in southwest Australia as in many other regions
18 around the world, absolute temperatures may now reach unprecedented highs during extreme
19 climatic events (Trenberth 2012). This will increase the likelihood of ecological tipping points
20 being exceeded, triggering rapid phase-shifts in some regions and habitats (Wernberg et al.
21 2016). Only time will tell, but the 2011 MHW may well have triggered rapid 'tropicalization'
22 (see Vergés et al. 2014) along much of the coastline, by driving widespread loss of temperate
23 flora and fauna and creating opportunities for rapid colonisation by a warm-water biota.
24 Moreover, inter-specific variability in susceptibility and responses to warming trends and
25 events, as shown here, will cause a reshuffling of species and the emergence of novel
26 communities and ecosystems.

1 *Acknowledgements:* We thank Scott Bennett, Tiffany Simpson, Emily Gates and Thibaut de
2 Bettignies for assistance in the field. This work was funded by the Australian Research Council
3 through grants to T.W and by a Marie Curie International Incoming Fellowship (within the
4 seventh European Community Framework Programme) awarded to D.A.S., who is currently
5 funded by the Natural Environment Research Council of the UK (IRF: NE/K008439/1).

6

7 LITERATURE CITED

8

- 9 Anderson MJ (2001) A new method for non-parametric multivariate analysis of variance.
10 *Austral Ecol* 26:32-46
- 11 Anderson MJ, Gorley RN, Clarke KR (2008) Permanova+ for primer: guide to software and
12 statistical methods. PRIMER-E, Plymouth, UK
- 13 Ayvazian SG, Hyndes GA (1995) Surf-zone fish assemblages in south-western Australia: do
14 adjacent nearshore habitats and the warm Leeuwin Current influence the characteristics
15 of the fish fauna? *Mar Biol* 122:527-536
- 16 Azzarello J, Smale DA, Langlois TJ, Håkansson E (2014) Linking habitat characteristics to
17 abundance patterns of canopy-forming macroalgae and sea urchins in southwest
18 Australia. *Mar Biol Res* 10:682-693
- 19 Bacolod PT, Dy DT (1986) Growth, recruitment pattern and mortality rate of the sea urchin,
20 *Tripneustes gratilla* Linnaeus, in a seaweed farm at Danahon Reef, Central Philippines
21 *Phillipine Sci* 23:1-14

- 1 Bennett S, Wernberg T, Connell SD, Hobday AJ, Johnson CR, Poloczanska ES (2015a) The
2 'Great Southern Reef': social, ecological and economic value of Australia's neglected
3 kelp forests. *Mar Freshwater Res* 67:47-56
- 4 Bennett S, Wernberg T, Harvey ES, Santana-Garcon J, Saunders BJ (2015b) Tropical
5 herbivores provide resilience to a climate-mediated phase shift on temperate reefs. *Ecol*
6 *Lett* 18:714-723
- 7 Bergmann N, Winters G, Rauch G, Eizaguirre C, Gu J, Nelle P, Fricke B, Reusch TBH (2010)
8 Population-specificity of heat stress gene induction in northern and southern eelgrass
9 *Zostera marina* populations under simulated global warming. *Mol Ecol* 19:2870-2883
- 10 Byrne M, Andrew N (2013) *Centrostephanus rodgersii*. In: Lawrence JM (ed) *Sea urchins:*
11 *biology and ecology*. Elsevier
- 12 Byrne M, Soars NA, Ho MA, Wong E, McElroy D, Selvakumaraswamy P, Dworjanyn SA,
13 Davis AR (2010) Fertilization in a suite of coastal marine invertebrates from SE
14 Australia is robust to near-future ocean warming and acidification. *Mar Biol* 157:2061-
15 2069
- 16 Caputi N, Fletcher WJ, Pearce A, Chubb CF (1996) Effect of the Leeuwin Current on the
17 recruitment of fish and invertebrates along the Western Australian coast. *Mar*
18 *Freshwater Res* 47:147-155
- 19 Caputi N, Kangas M, Denham A, Feng M, Pearce A, Hetzel Y, Chandrapavan A (2016)
20 Management adaptation of invertebrate fisheries to an extreme marine heat wave event
21 at a global warming hot spot. *Ecol Evol* 6:3583-3593
- 22 Clarke KR, Warwick RM (2001) *Change in marine communities: an approach to statistical*
23 *analysis and interpretation*. PRIMER-E Ltd., Plymouth, UK

- 1 Depczynski M, Gilmour JP, Ridgway T, Barnes H, Heyward AJ, Holmes TH, Moore JAY,
2 Radford BT, Thomson DP, Tinkler P, Wilson SK (2013) Bleaching, coral mortality and
3 subsequent survivorship on a West Australian fringing reef. *Coral Reefs* 32:233-238
- 4 Diaz-Almela E, Marba N, Duarte CM (2007) Consequences of Mediterranean warming events
5 in seagrass (*Posidonia oceanica*) flowering records. *Glob Change Biol* 13:224-235
- 6 Dworjanyn SA, Pirozzi I (2008) Induction of settlement in the sea urchin *Tripneustes gratilla*
7 by macroalgae, biofilms and conspecifics: A role for bacteria? *Aquaculture* 274:268-
8 274
- 9 Ettinger-Epstein P, Kingsford MJ (2008) Effects of the El Niño southern oscillation on *Turbo*
10 *torquatus* (Gastropoda) and their kelp habitat. *Austral Ecol* 33:594-606
- 11 Feng M, McPhaden MJ, Xie S, Hafner J (2013) La Niña forces unprecedented Leeuwin Current
12 warming in 2011. *Sci Rep* 3:1277
- 13 García Molinos J, Halpern BS, Schoeman DS, Brown CJ, Kiessling W, Moore PJ, Pandolfi
14 JM, Poloczanska ES, Richardson AJ, Burrows MT (2016) Climate velocity and the
15 future global redistribution of marine biodiversity. *Nature Clim Change* 6:83-88
- 16 Garrabou J, Coma R, Bensoussan N, Bally M, Chevaldonne P, Cigliano M, Diaz D, Harmelin
17 JG, Gambi MC, Kersting DK, Ledoux JB, Lejeusne C, Linares C, Marschal C, Perez T,
18 Ribes M, Romano JC, Serrano E, Teixido N, Torrents O, Zabala M, Zuberer F, Cerrano
19 C (2009) Mass mortality in Northwestern Mediterranean rocky benthic communities:
20 effects of the 2003 heat wave. *Glob Change Biol* 15:1090-1103
- 21 Hansen J, Sato M, Ruedy R (2012) Perception of climate change. *Proc Nat Acad Sci USA*
22 109:E2415-E2423

- 1 Hobday AJ, Alexander LV, Perkins SE, Smale DA, Straub SC, Oliver EC, Benthuyssen J,
2 Burrows MT, Donat MG, Feng M, Holbrook NJ, Moore PJ, Scannell HA, Sen Gupta
3 A, Wernberg T (2016) A hierarchical approach to defining marine heatwaves. *Prog*
4 *Oceanogr* 141:227-238
- 5 IPCC (2012) *Managing the Risks of Extreme Events and Disasters to Advance Climate Change*
6 *Adaptation. A Special Report of Working Groups I and II of the Intergovernmental*
7 *Panel on Climate Change.* Cambridge University Press, Cambridge, UK, and New
8 York, NY, USA
- 9 Joll L (1980) Reproductive biology of two species of Turbinidae (Mollusca : Gastropoda). *Mar*
10 *Freshwater Res* 31:319-336
- 11 Keesing JK (2001) The ecology of *Heliocidaris erythrogramma*. In: John ML (ed)
12 *Developments in Aquaculture and Fisheries Science, Book Volume 32.* Elsevier
- 13 Lejeusne C, Chevaldonne P, Pergent-Martini C, Boudouresque CF, Perez T (2009) Climate
14 change effects on a miniature ocean: the highly diverse, highly impacted Mediterranean
15 Sea. *Trends Ecol Evol* 25:250-260
- 16 Levitus S, Antonov JI, Boyer TP, Baranova OK, Garcia HE, Locarnini RA, Mishonov AV,
17 Reagan JR, Seidov D, Yarosh ES, Zweng MM (2012) World ocean heat content and
18 thermosteric sea level change (0–2000 m), 1955–2010. *Geophys Res Lett* 39:L10603
- 19 Lima FP, Wethey DS (2012) Three decades of high-resolution coastal sea surface temperatures
20 reveal more than warming. *Nature Commun* 3:704
- 21 Ling SD, Johnson CR, Frusher S, King CK (2008) Reproductive potential of a marine
22 ecosystem engineer at the edge of a newly expanded range *Glob Change Biol* 14:907-
23 915

- 1 Ling SD, Johnson CR, Frusher SD, Ridgway KR (2009) Overfishing reduces resilience of kelp
2 beds to climate-driven catastrophic phase shift. Proc Nat Acad Sci USA 106:22341-
3 22345
- 4 Lozano-Montes HM, Loneragan NR, Babcock RC, Jackson K (2011) Using trophic flows and
5 ecosystem structure to model the effects of fishing in the Jurien Bay Marine Park,
6 temperate Western Australia. Mar Freshwater Res 62:421-431
- 7 MacArthur LD, Phillips DL, Hyndes GA, Hanson CE, Vanderklift MA (2011) Habitat
8 surrounding patch reefs influences the diet and nutrition of the western rock lobster.
9 Mar Ecol Prog Ser 436:191-205
- 10 Marba N, Duarte CM (2010) Mediterranean warming triggers seagrass (*Posidonia oceanica*)
11 shoot mortality. Glob Change Biol 16:2366-2375
- 12 Marsh LM (1994) Echinoderms of the Houtman Abrolhos Islands, Western Australia and their
13 relationship to the Leeuwin Current. In: David B, Guille A, Feral J-P (eds) Echinoderms
14 through time: Proceedings of the 8th international echinoderm conference, Dijon,
15 France, 6-10 September 1993 A. A. Balkema Rotterdam
- 16 Meehl G, Tebaldi C (2004) More intense, more frequent, and longer lasting heat waves in the
17 21st Century. Science 305:994-997
- 18 Moore JAY, Bellchambers LM, Depczynski MR, Evans RD, Evans SN, Field SN, Friedman
19 KJ, Gilmour JP, Holmes TH, Middlebrook R, Radford BT, Ridgway T, Shedrawi G,
20 Taylor H, Thomson DP, Wilson SK (2012) Unprecedented mass bleaching and loss of
21 coral across 12° of latitude in Western Australia in 2010–11. PLoS ONE 7:e51807
- 22 Normile D (2016) El Niño's warmth devastating reefs worldwide. Science 352:15-16

- 1 Ogden NB, Ogden JC, Abbott IA (1989) Distribution, abundance and food of sea urchins on a
2 leeward Hawaiian reef. *Bull Mar Sci* 45:539-549
- 3 Pearce A, Feng M (2007) Observations of warming on the Western Australian continental
4 shelf. *Mar Freshwater Res* 58:914-920
- 5 Pearce A, Lenanton R, Jackson G, Moore J, Feng M, Gaughan D (2011) The “marine heat
6 wave” off Western Australia during the summer of 2010/11. Fisheries Research Report
7 No. 222. Department of Fisheries, Perth, Australia
- 8 Pearce AF (1991) Eastern boundary currents of the southern hemisphere. *J Roy Soc West Aust*
9 74:35-45
- 10 Pearce AF, Feng M (2013) The rise and fall of the “marine heat wave” off Western Australia
11 during the summer of 2010/2011. *J Mar Syst* 111–112:139-156
- 12 Pecorino D, Barker MF, Dworjanyn SA, Byrne M, Lamare MD (2014) Impacts of near future
13 sea surface pH and temperature conditions on fertilisation and embryonic development
14 in *Centrostephanus rodgersii* from northern New Zealand and northern New South
15 Wales, Australia. *Mar Biol* 161:101-110
- 16 Phillips B (1969) The population of the whelk *Dicathais aegrota* in Western Australia. *Mar*
17 *Freshwater Res* 20:225-266
- 18 Rahmstorf S, Coumou D (2011) Increase of extreme events in a warming world. *Proc Nat Acad*
19 *Sci USA* 108:17905-17909
- 20 Rose T, Smale DA, Botting GC (2012) The 2011 marine heat wave in Cockburn Sound,
21 southwest Australia. *Ocean Sci* 8:545-550

- 1 Searle DJ, Semeniuk V (1985) The natural sectors of the inner Rottneest Shelf coast adjoining
2 the Swan Coastal Plain. *J Roy Soc West Aust* 67:116-136
- 3 Shepherd S, Edgar G (2013) *Ecology of Australian temperate reefs: the unique South*. CSIRO
4 publishing, Clayton, Victoria, Australia
- 5 Sheppard Brennand H, Soars N, Dworjanyn SA, Davis AR, Byrne M (2010) Impact of ocean
6 warming and ocean acidification on larval development and calcification in the sea
7 urchin *Tripneustes gratilla*. *PLoS ONE* 5:e11372
- 8 Smale DA, Kendrick GA, Wernberg T (2010) Assemblage turnover and taxonomic sufficiency
9 of subtidal macroalgae at multiple spatial scales. *J Exp Mar Biol Ecol* 384:76-86
- 10 Smale DA, Wernberg T (2009) Satellite-derived SST data as a proxy for water temperature in
11 nearshore benthic ecology. *Mar Ecol Prog Ser* 387:27-37
- 12 Smale DA, Wernberg T (2012) Ecological observations associated with an anomalous warming
13 event at the Houtman Abrolhos Islands, Western Australia. *Coral Reefs* 31:441
- 14 Smale DA, Wernberg T (2013) Extreme climatic event drives range contraction of a habitat-
15 forming species. *Proc Roy Soc B Biol Sci* 280:20122829
- 16 Smale DA, Wernberg T (2014) Population structure of the purple sea urchin *Heliocidaris*
17 *erythrogramma* along a latitudinal gradient in southwest Australia. *J Mar Biol Assoc*
18 *UK* 94:1033-1040
- 19 Smale DA, Wernberg T, Vance T (2011) Community development on subtidal temperate reefs:
20 the influences of wave energy and the stochastic recruitment of a dominant kelp. *Mar*
21 *Biol* 158:1757–1766

- 1 Smith RL, Huyer A, Godfrey JS, Church JA (1991) The Leeuwin Current off Western
2 Australia. *J Phys Oceanogr* 21:323-345
- 3 Stoner AW (2009) Habitat-mediated survival of newly settled red king crab in the presence of
4 a predatory fish: Role of habitat complexity and heterogeneity. *J Exp Mar Biol Ecol*
5 382:54-60
- 6 Thibault KM, Brown JH (2008) Impact of an extreme climatic event on community assembly
7 *Proc Nat Acad Sci USA* 105:3410-3415
- 8 Tittensor DP, Mora C, Jetz W, Lotze HK, Ricard D, Berghe EV, Worm B (2010) Global
9 patterns and predictors of marine biodiversity across taxa. *Nature* 466:1098-1101
- 10 Trenberth KE (2012) Framing the way to relate climate extremes to climate change. *Climatic*
11 *Change* 115:283-290
- 12 Valentine JP, Edgar GJ (2010) Impacts of a population outbreak of the urchin *Tripneustes*
13 *gratilla* amongst Lord Howe Island coral communities. *Coral Reefs* 29:399-410
- 14 Van De Pol M, Ens BJ, Heg D, Brouwer L, Krol J, Maier M, Exo K-M, Oosterbeek K, Lok T,
15 Eising CM, Koffijberg K (2010) Do changes in the frequency, magnitude and timing of
16 extreme climatic events threaten the population viability of coastal birds? *J Appl Ecol*
17 47:720-730
- 18 Vanderklift MA, Kendrick GA (2004) Variations in abundances of herbivorous invertebrates
19 in temperate subtidal rocky reef habitats. *Mar Freshwater Res* 55:93-103
- 20 Vanderklift MA, Kendrick GA, Smit AJ (2006) Differences in trophic position among
21 sympatric sea urchin species. *Estuarine, Coastal and Shelf Science* 66:291-297

1 Vanderklift MA, Wernberg T (2010) Stable isotopes reveal a consistent consumer-diet
2 relationship across hundreds of kilometers. *Mar Ecol Prog Ser* 403:53-61

3 Vergés A, Steinberg PD, Hay ME, Poore AGB, Campbell AH, Ballesteros E, Heck KL, Booth
4 DJ, Coleman MA, Feary DA, Figueira W, Langlois T, Marzinelli EM, Mizerek T,
5 Mumby PJ, Nakamura Y, Roughan M, van Sebille E, Gupta AS, Smale DA, Tomas F,
6 Wernberg T, Wilson SK (2014) The tropicalization of temperate marine ecosystems:
7 climate-mediated changes in herbivory and community phase shifts. *Proc Roy Soc B*
8 281:20140846

9 Wernberg T, Bennett S, Babcock RC, de Bettignies T, Cure K, Depczynski M, Dufois F,
10 Fromont J, Fulton CJ, Hovey RK, Harvey ES, Holmes TH, Kendrick GA, Radford B,
11 Santana-Garcon J, Saunders BJ, Smale DA, Thomsen MS, Tuckett CA, Tuya F,
12 Vanderklift MA, Wilson S (2016) Climate-driven regime shift of a temperate marine
13 ecosystem. *Science* 353:169-172

14 Wernberg T, Russell BD, Moore PJ, Ling SD, Smale DA, Coleman M, Steinberg PD, Kendrick
15 GA, Connell SD (2011) Impacts of climate change in a global hotspot for temperate
16 marine biodiversity and ocean warming. *J Exp Mar Biol Ecol* 400:7-16

17 Wernberg T, Smale DA, Tuya F, Thomsen MS, Langlois TJ, de Bettignies T, Bennett S,
18 Rousseaux CS (2013) An extreme climatic event alters marine ecosystem structure in a
19 global biodiversity hotspot. *Nature Clim Change* 3:78-82

20 Wernberg T, Thomsen MS, Tuya F, Kendrick GA, Staehr PA, Toohey BD (2010) Decreasing
21 resilience of kelp beds along a latitudinal temperature gradient: potential implications
22 for a warmer future. *Ecol Lett* 13:685-694

1 Wernberg T, White M, Vanderklift MA (2008) Population structure of turbinid gastropods on
2 wave-exposed subtidal reefs: effects of density, body size and algae on grazing
3 behaviour. *Mar Ecol Prog Ser* 362:169-179

4 Williams ST (2007) Origins and diversification of Indo-West Pacific marine fauna:
5 evolutionary history and biogeography of turban shells (Gastropoda, Turbinidae). *Biol*
6 *J Linnean Soc* 92:573-592

7 Wolfe K, Dworjanyn SA, Byrne M (2013) Effects of ocean warming and acidification on
8 survival, growth and skeletal development in the early benthic juvenile sea urchin
9 (*Heliocidaris erythrogramma*). *Glob Change Biol* 19:2698-2707

10

11

1 **Table 1.** Most common macroinvertebrate species recorded during surveys and their
2 affinities and broad-scale distributions within the southwest Australian study region. The
3 proportion of distribution records found either north or south of Jurien Bay (30.3°S) is
4 provided as an indication of the biogeographical affinities of each species (records were
5 downloaded from The Atlas of Living Australia - <http://www.ala.org.au> - on 30/01/2017).
6 Additional general information sourced from Edgar (1997). #Indicates few existing records
7 for that species and as such distributions should be treated with caution, but wider affinity
8 determined from best available knowledge.

9

Species	Taxa	Affinity and distribution
<i>Centrostephanus tenuispinus</i>	Sea urchin	Warm; warm-temperate, northern range-limit at Shark Bay (25.3 °S). #28.3% of 11 records north of 30.3°S. Family characteristic of tropical reefs
<i>Tripneustes gratilla</i>	Sea urchin	Warm; tropical, northern Australia, 68.8% of 288 records north of 30.3°S
<i>Phyllacanthus irregularis</i>	Sea urchin	Cool; temperate, #70% of 20 records south of 30.3°S
<i>Heliocidaris erythrogramma</i>	Sea urchin	Cool; temperate, 92.3% of 607 records south of 30.3°S.
<i>Lunella torquatus</i>	Gastropod mollusc	Cool; temperate, 87.4% of 372 records south of 30.3°S
<i>Astraliium</i> spp. (<i>A. tentorium</i> / <i>A. squamiferum</i>)	Gastropod mollusc	Cool; temperate, 94.9% of 431 records south of 30.3°S
<i>Dicathais orbita</i>	Gastropod mollusc	Cool; temperate, 90.9% of 2242 records south of 30.3°S
<i>Petricia vernicina</i>	Sea star	Cool; temperate, 97.0% of 755 records south of 30.3°S

10

11

1 Figure legends

2

3 **Fig 1.** Map of southwest Australia indicating the Kalbarri (K), Jurien Bay (J), Marmion Lagoon
4 (M) and Hamelin Bay (H) study locations. The region is characterized by a well-defined
5 oceanic temperature gradient, represented here by average winter isotherms (in °C, 2005–07).
6 Temperature anomalies represent deviations from monthly long-term means (1981-2010),
7 derived from remotely-sensed satellite SSTs.

8 **Fig. 2.** PCO plots showing macroinvertebrate assemblage structure on reef flats before and
9 after the MHW at each location. Ordinations are based on Bray-Curtis similarities of square-
10 root transformed abundance data. Dashed circle in Kalbarri plot indicates 16 overlapping
11 samples (15 samples post-MHW and 1 sample pre-MHW) in which macroinvertebrates were
12 absent.

13 **Fig. 3.** PCO plots showing macroinvertebrate assemblage structure on reef slopes before and
14 after the MHW at each location. Ordinations are based on Bray-Curtis similarities of square-
15 root transformed abundance data.

16 **Fig. 4.** Mean total abundance (left-hand plots) and taxon richness (right-hand plots) of all
17 mobile macroinvertebrates on reef flats and slopes at each location before (blue bars) and after
18 (red bars) the MHW (\pm SE). Values represent number of individuals/species per 25 m² sample
19 area (i.e. 5 transects pooled per site). Significant differences before and after the MHW are
20 indicated with an asterisk (at $P > 0.05$, test results shown in Tables S6 and S7).

21 **Fig. 5.** Mean abundances (\pm SE) of dominant species on reef flats before (blue bars) and after
22 (red bars) the MHW. Significant differences before and after the MHW are indicated with an
23 asterisk (at $P > 0.05$, test results shown in Table S8).

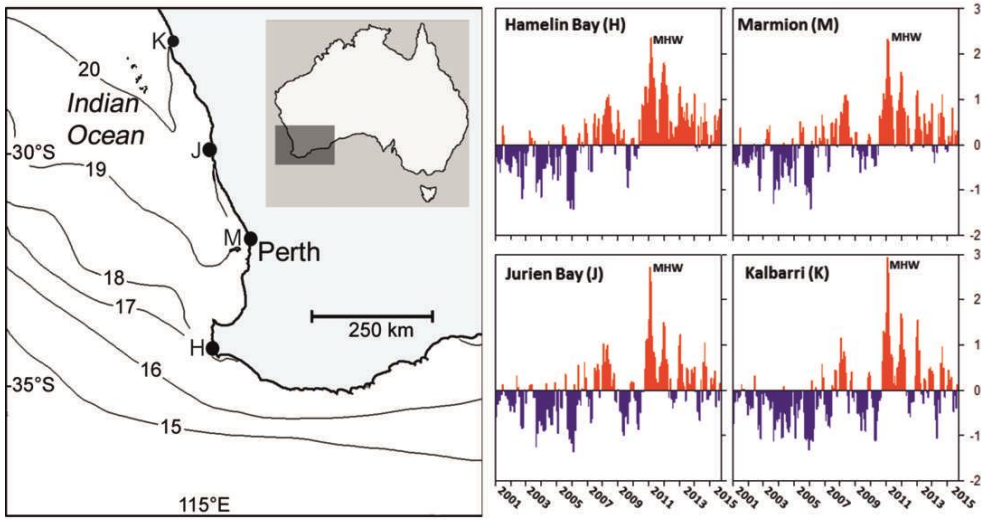
1 **Fig. 6.** Mean abundances (\pm SE) of dominant species on reef slopes before (blue bars) and after
2 (red bars) the MHW. Significant differences before and after the MHW are indicated with an
3 asterisk (at $P > 0.05$, test results shown in Table S9)

4 **Fig. 7.** The relative abundances of sea urchins recorded on reef slopes during each survey year
5 at each location (average of 3 sites per location). The timing of the MHW is also shown.

6

1

2



3

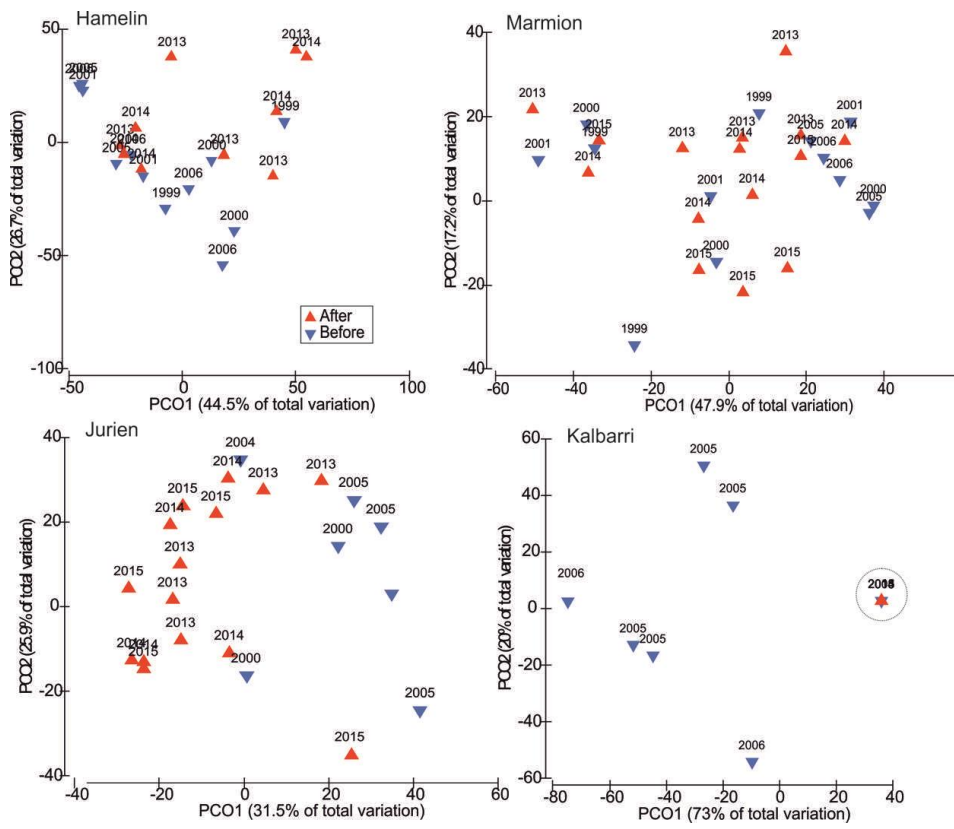
4

5 Fig. 1

6

7

1



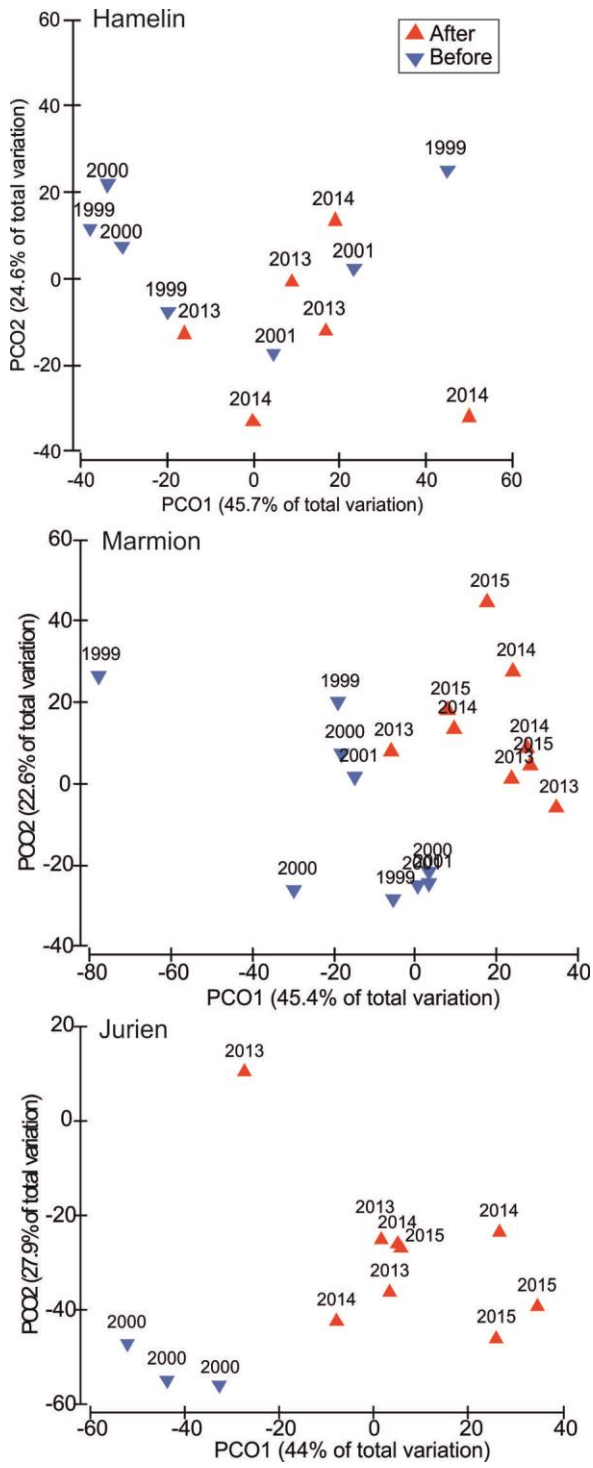
2

3

4 Fig. 2

5

1

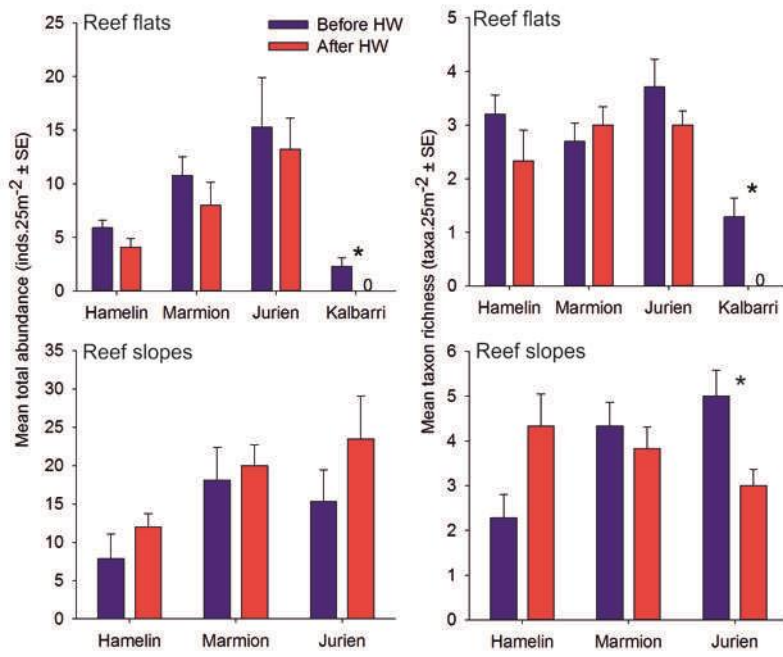


2

3

4 Fig. 3

1



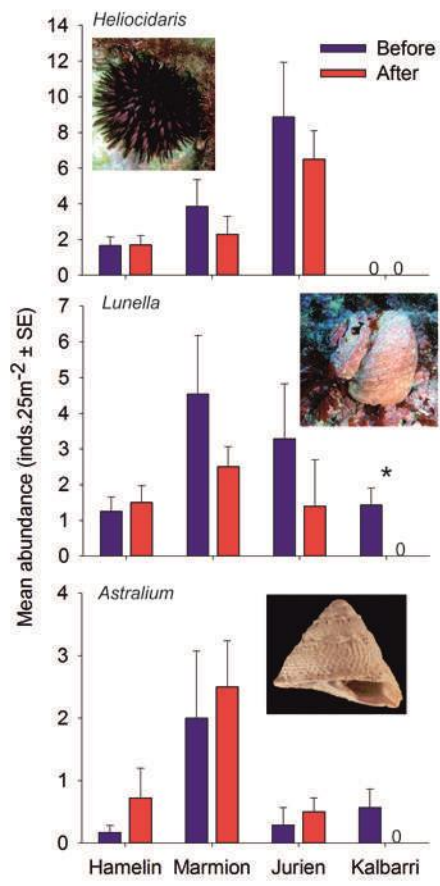
2

3

4 Fig. 4

5

1

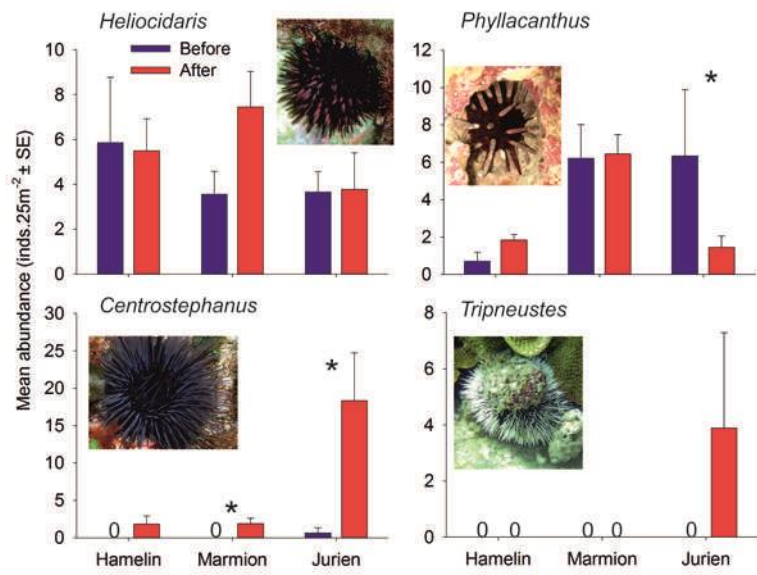


2

3

4 Fig. 5

5



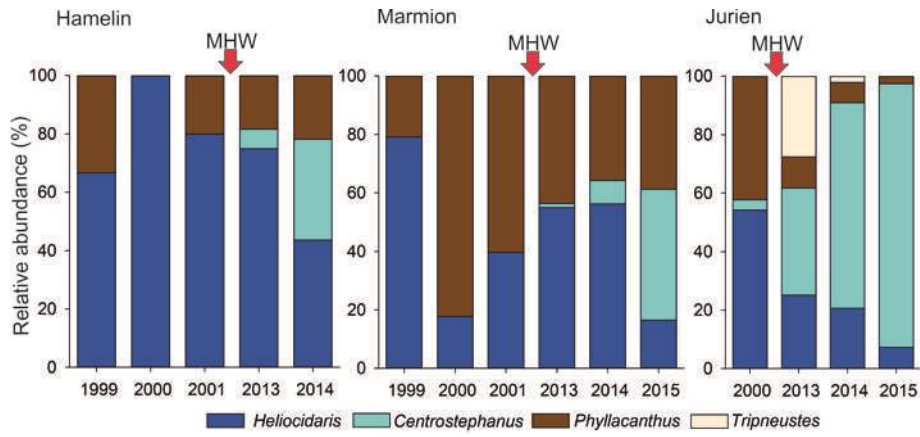
1

2

3

4 Fig. 6

1



2

3

4

5

6 Fig 7.

7

8

9

10

11

12

13

14

15

16