



SEA THE VALUE

MARINE BIODIVERSITY BENEFITS
FOR A SUSTAINABLE SOCIETY

PML | Publishing

Marine natural capital training materials

Originally produced for the Coastal Partnerships Network (CPN)
by the Sea the Value Project Team, 2024



Introduction

Sea the Value brings together a unique interdisciplinary team and international network of collaborators to address fundamental questions regarding the economics of biodiversity, specifically of blue carbon and marine water quality. The team includes internationally recognised expertise in environmental and ecological economics, marine ecology, human geography, governance, and finance, putting us in an unrivalled position to make a transformative change. Our vision is to determine novel and policy relevant pluralistic values for marine biodiversity and apply these values to co-develop green investment options, leading to a transformative shift in our understanding and utilisation of the economics of biodiversity.

Contents

| | |
|---|----|
| Overview | 3 |
| Workshop summaries | 4 |
| Workshop 1: Natural Capital & Understanding Value | 6 |
| Workshop 2: Interlinkages between Biodiversity & Natural Capital..... | 9 |
| Workshop 3: Participatory Mapping | 10 |
| Workshop 4: Funding Nature's Needs | 13 |

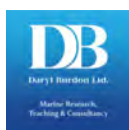
This training material is free to use for its intended purposes and should be credited as “Marine Natural Capital Training material from the Sea The Value project.”

These materials have been produced by PML, eftec, and Sea The Value project partners to support Marine Natural Capital Assessments in the UK. While every effort has been made to ensure accuracy, PML and eftec are not responsible for any omissions or errors.

If you use this material or have feedback, please contact us at impact@pml.ac.uk.

Please cite this document as:

Collar, M., Contento, C., Dickie, I., Watson, S.C.L., Broszeit, S., Preston, J., Van der Schatte, A., Watson, G., Anbleyth-Evans, J., Burdon, D., Potts, T., Chan, C., Chung, P., Tinch, R., Erskine, A., Watts, A., Beaumont N. (2025). Sea the Value Marine Natural Capital Training Materials. Plymouth, UK. PML Publishing. 14pp. DOI: 10.17031/mee8-y329



Plymouth Marine Laboratory





Overview

The Sea the Value Project hosted a series of workshops aimed at members of the Coastal Partnerships Network (CPN) to build understanding of key concepts that the Sea the Value project aims to address. Across four workshops we discussed approaches to better understand, protect, and restore coastal habitats, drawing on insights from our work and approach. The series provides valuable tools for participants from different backgrounds to collaborate in managing our coasts and local environments and provides a starting point for those looking to run their own workshops with local community groups and networks.



The Sea the Value team.



Workshop summaries

Workshop 1: Natural Capital & Understanding Value

This session introduced natural capital and explored different ways of understanding its value. It was explained how the Sea the Value project uses mapping to assess natural capital and guided participants through creating their own maps and asset registers. The workshop included a group discussion on these maps and a wrap-up on key learnings.

 [Download workshop 1 material](#)

Workshop 2: Interlinkages between Biodiversity & Natural Capital

This workshop focused on the relationship between biodiversity and natural capital. Participants engaged in tasks to assess biodiversity, identify influencing factors, and explore data sources for biodiversity information. The session concluded with feedback and outputs to help integrate biodiversity considerations into natural capital management.

 [Download workshop 2 material](#)

Workshop 3: Participatory Mapping

This session introduced Participatory Mapping, a process that enables communities to map their local environments and engage in discussions about natural, managed, and man-made features. Participants were shown how to apply this process in their own communities, with the option to seek additional support from Sea the Value project experts.

 [Download workshop 3 material](#)

Workshop 4: Funding Nature's Needs

In this workshop, the economic and social values associated with biodiversity were explored and applied to natural capital accounting. Participants learned how to link natural capital to funding opportunities and discussed investment considerations for maintaining and enhancing biodiversity through group activities.

 [Download workshop 4 material](#)



Southport yacht basin. Nick. Adobe Stock.



Workshop 1: Natural Capital & Understanding Value

This session introduced natural capital and explored different ways of understanding its value. We explained how the Sea the Value project uses mapping to assess natural capital and guided participants through creating their own maps and asset registers. The workshop included a group discussion on these maps and a wrap-up on key learnings.

 [Download workshop 1 material](#)

The resources on this page are designed to support exploration of Natural Capital and Understanding Value. Some resources have been adapted to assist those planning their own workshops.

Recording from workshop 1

The recording (https://youtu.be/mlTk_XRFWaY) from the original training delivered by the Sea the Value team to the Coastal Partnerships workshop in June 2024 provides useful context for the following materials and serves as a guide for planning similar workshops.



Workshop 1 slides

Natural capital and different ways of understanding value.

Training Guide (work document)

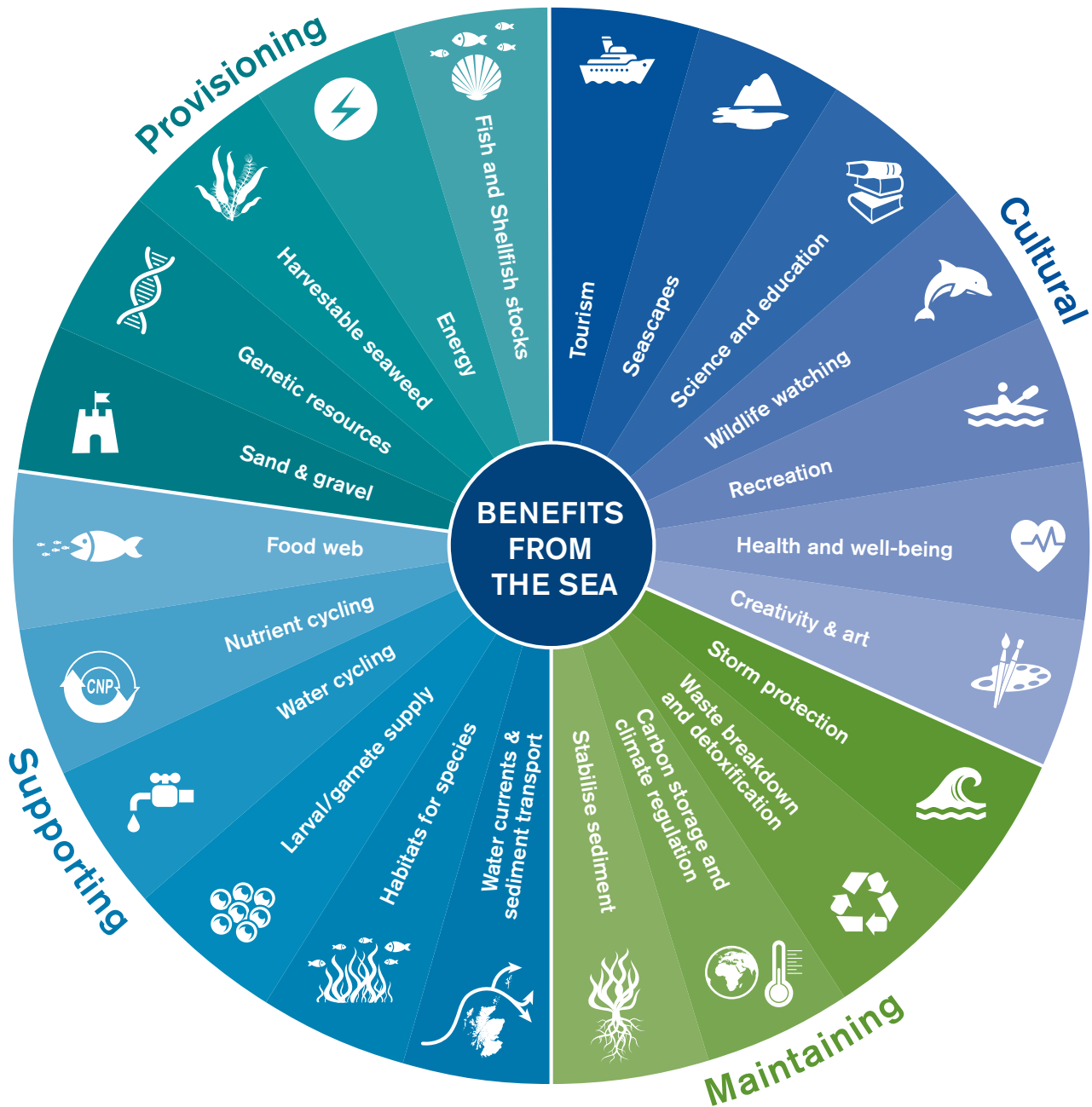
This training guide will help you work through the exercise sheets below.

Marine Training Exercise (excel spreadsheet)

This is the exercise that we ran through during the original workshop, so have a go at it.

Marine Training Exercise (for trainers) (excel spreadsheet)

This is the exact same exercise, but with guidance for trainers (designed to help people who are running their own workshops).



A visualisation of the benefits derived from the sea, categorised into four key ecosystem service groups: provisioning, supporting, regulating, and cultural. Each segment highlights specific services, such as fish and shellfish stocks, nutrient cycling, carbon storage, and tourism, showcasing the diverse value that marine ecosystems contribute to society and the environment.

NatureScot (2020) Marine ecosystem services wheel. <https://www.nature.scot>



Eelgrass bed. Divedog. Adobe Stock.



Workshop 2: Interlinkages between Biodiversity & Natural Capital

This workshop focused on the relationship between biodiversity and natural capital. Participants engaged in tasks to assess biodiversity, identify influencing factors, and explore data sources for biodiversity information. The session concluded with feedback and outputs to help integrate biodiversity considerations into natural capital management.

 [Download workshop 2 material](#)

Below are some resources that will be of interest if you are exploring interlinkages between biodiversity and natural capital, or just interested in the topic. The original training was delivered by the Sea the Value team to the Coastal Partnerships workshop in June 2024.

[Data Portals](#)

The Sea the Value Team have put together a spreadsheet with information on a lot of different data portals, what information you can download from them and what extent they cover (e.g. UK, Global etc.). This is a super useful resources if you find yourself looking where to find biodiversity/natural capital data.

[Workshop 2 Slides](#)

These are the slides from the workshop, they offer context around the subject, and some detail on what the Sea the Value project is doing in this area.



Workshop 3: Participatory Mapping

This session introduced Participatory Mapping, a process that enables communities to map their local environments and engage in discussions about natural, managed, and man-made features. Participants were shown how to apply this process in their own communities, with the option to seek additional support from Sea the Value project experts.

 [Download workshop 3 material](#)

This workshop provided an engaging introduction and overview of the Participatory Mapping process in a condensed format. The recording allows viewers to gain insights from the original workshop.

Recording from workshop 3

Here is the recording (<https://youtu.be/KO-ZcDqCd2I>) from the original session in June 2024.



Workshop 3 slides

CPN Training Workshop #3: Participatory Mapping.



Black Island and Cromarty Firth. Andy Morehouse. Adobe Stock.



Participants engaging in collaborative group activities during the Sea the Value workshops, including interactive mapping exercises, field visits, and teamwork.



Workshop 4: Funding Nature's Needs

The workshop explored the economic and social values associated with biodiversity, applying these values to natural capital accounting. Participants learned how to link natural capital to funding opportunities and discussed investment considerations for maintaining and enhancing biodiversity through group activities.

 [Download workshop 4 material](#)

This workshop gives a fantastic overview of natural capital and funding, investment options and general conversation around Funding Natures Needs. The workshop featured inspiring discussions and provides an engaging and educational video resource.

Recording from workshop 4

Here is the recording (<https://youtu.be/eBHsPjJJhqc>) from the original session, “funding nature’s needs” in June 2024.



Workshop 4 slides

Funding Nature's Needs.



Published by PML Publishing
by Plymouth Marine Laboratory

PML | Publishing



Natural
Environment
Research Council



Economic
and Social
Research Council

This research was supported by the UK Research Councils under Natural Environment Research Council award NE/X002357/1 "Sea the Value"