

# Chthamalid cyprid identification – a photographic guide

Copyright: Martin K.S. Lilley

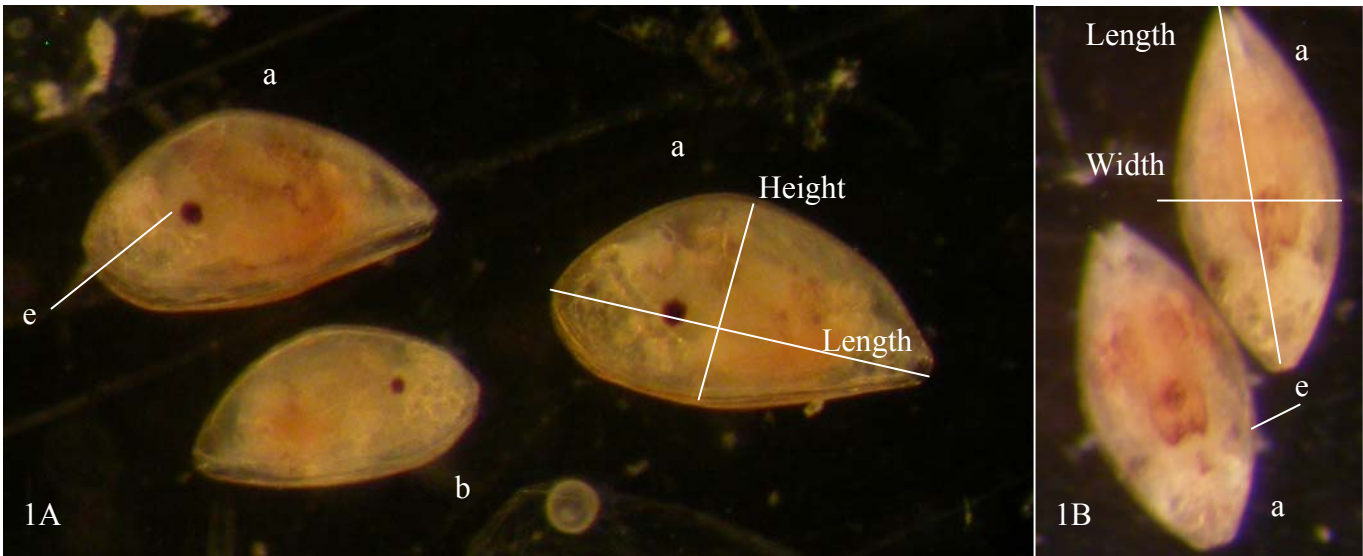


Plate 1 - Dimensions of cyprids mentioned in text, including eyes (e) – (1A) lateral view (1B) dorsal view – *C. stellatus* (a), *C. montagui* (b).

	<i>C. montagui</i> (CM)	<i>C. stellatus</i> (CS)
Length	400-550µm	550-650µm
Height	Half of length	Half of length
Width	$\frac{1}{3}^{rd} - \frac{1}{2}$ of length	$\frac{1}{3}^{rd}$ of length
Eye	Clearly visible, smaller than CS, equidistant from top, bottom and front	Larger than CM, visible, above mid-line in lateral view
Anterior shape	Very rounded in both dorsal and lateral views (no anterior point, few/no lipid globules compared to <i>Elminius</i> – Plate 2)	Rounded in lateral view (no anterior point or lipid globules compared to <i>Elminius</i> – Plate 2) and more angled in dorsal view.
Dorsal curve	Continuous curve	Continuous curve, higher arch than <i>Elminius</i> or CM in lateral profile
Distinctive features from dorsal view	Looks wider than CS proportionate to length, rounded anterior, filled brown circular mark just <u>behind</u> the eyes	Narrower than CM, pod-like shape with sharp ends (in dorsal view only). Longer than <i>Elminius</i> . Semicircular / ‘curved-W’ brown curved line and brown dot inside the line found just <u>behind</u> the eyes
Colour	Cream and opaque colours with brown internal markings often near rear of cyprid.	Deep yellow colour. common red internal markings.

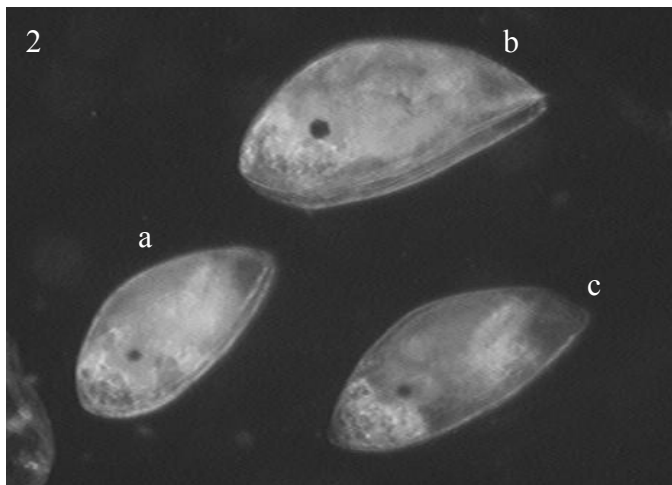


Plate 2 - Differences between species on initial assessment (a) *C. montagui*, (b) *C. stellatus* and (c) *Elminius modestus* (~ 550µm long) showing obvious pointed anterior end, lots of lipid globules and longer, slimmer shape compared to CM & CS.

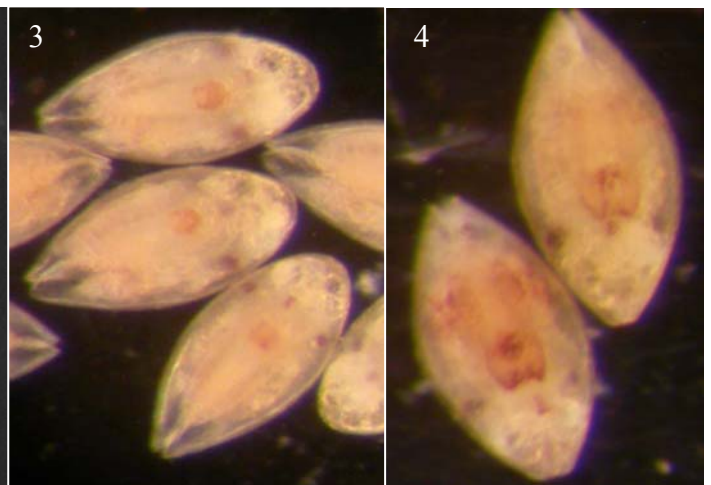


Plate 3 - CM shown dorsally, note broad shape and central red/brown spot behind eyes.

Plate 4 - CS seen dorsally. Pod-like shape, curved red ‘W’ centrally on back behind eyes

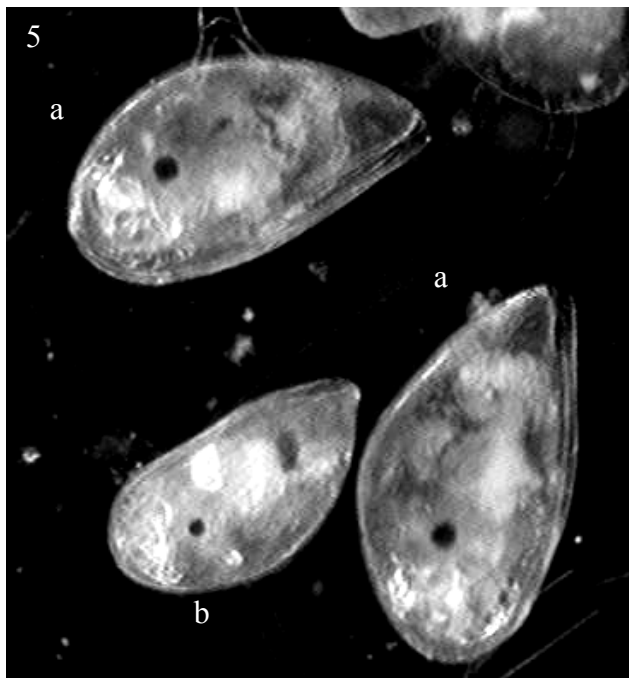


Plate 5 - Lateral view showing body shape, eye locations and internal markings. (a) *C. stellatus*, (b) *C. montagui*.

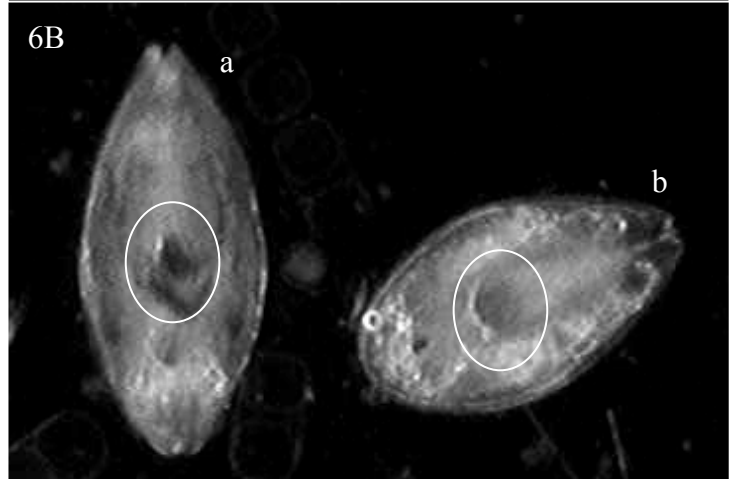
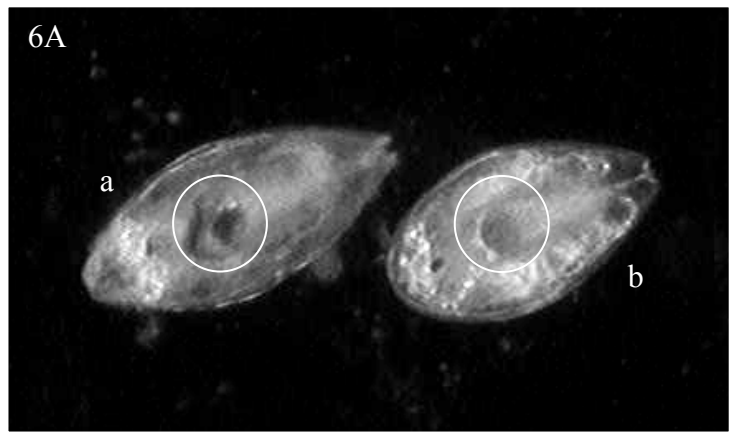


Plate 6A, 6B - Dorsal views showing obvious wide bodies compared to other species and dark centralised marks clearly visible under a microscope (circled). (a) *C. stellatus*, (b) *C. montagui*.

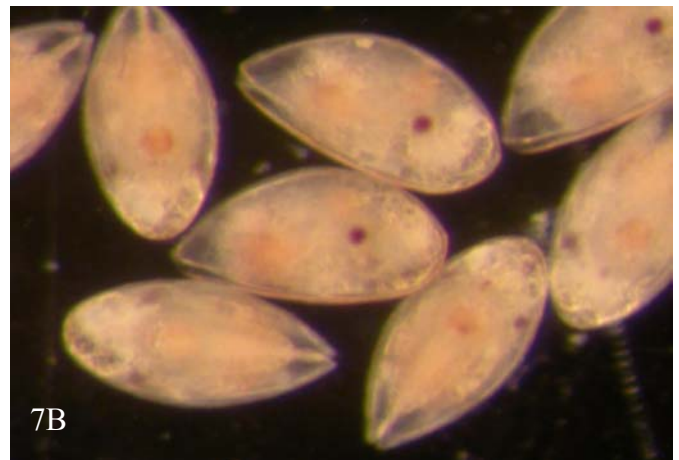
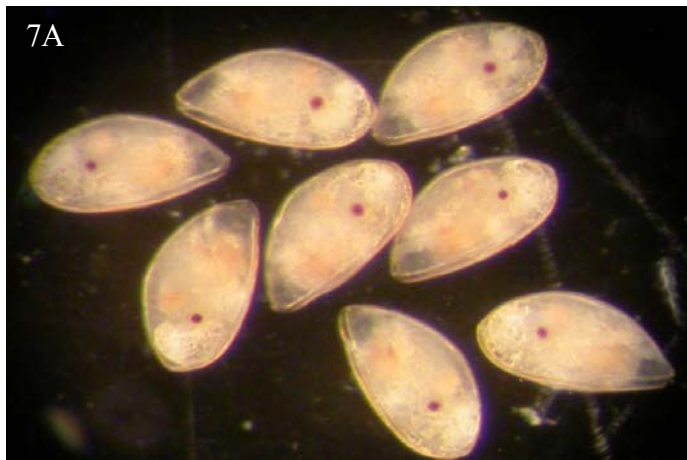


Plate 7 - Shape and colour variations in *C. montagui*. (7A) lateral, (7B) lateral and dorsal views.

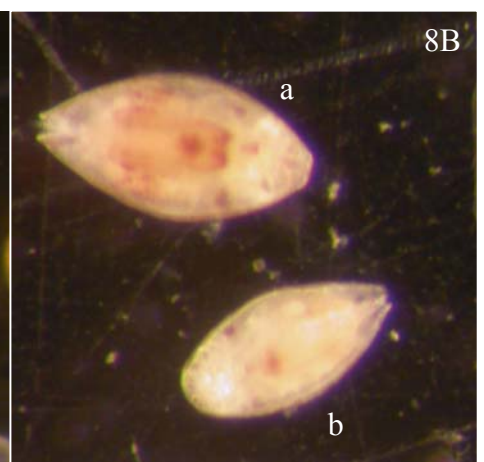
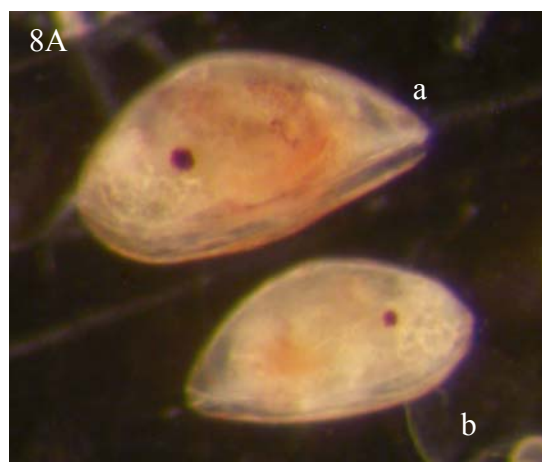


Plate 8 - Shape, pigmentation and colour variation between chthamalid species (a) *C. stellatus*, (b) *C. montagui*. (8A) lateral view, (8B) dorsal views.

Copyright and all photographs by Martin K.S. Lilley @ The Marine Biological Association of the UK, Plymouth, August 2006.

email – [martin.lilley@univ.bangor.ac.uk](mailto:martin.lilley@univ.bangor.ac.uk)